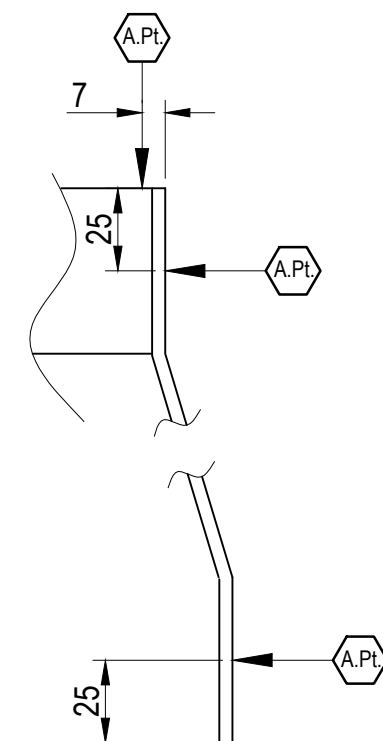
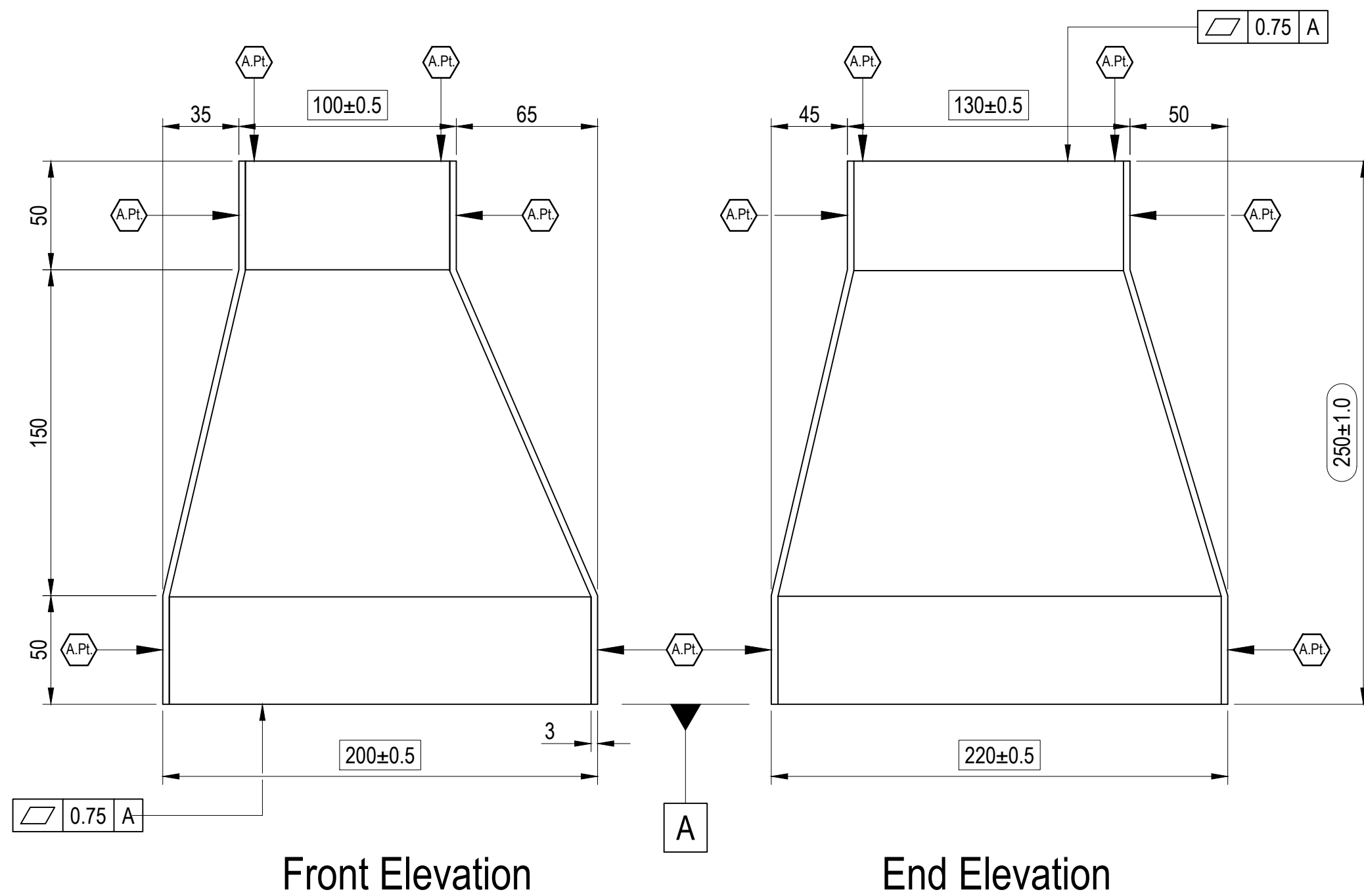
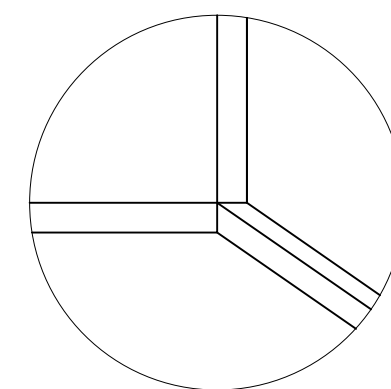
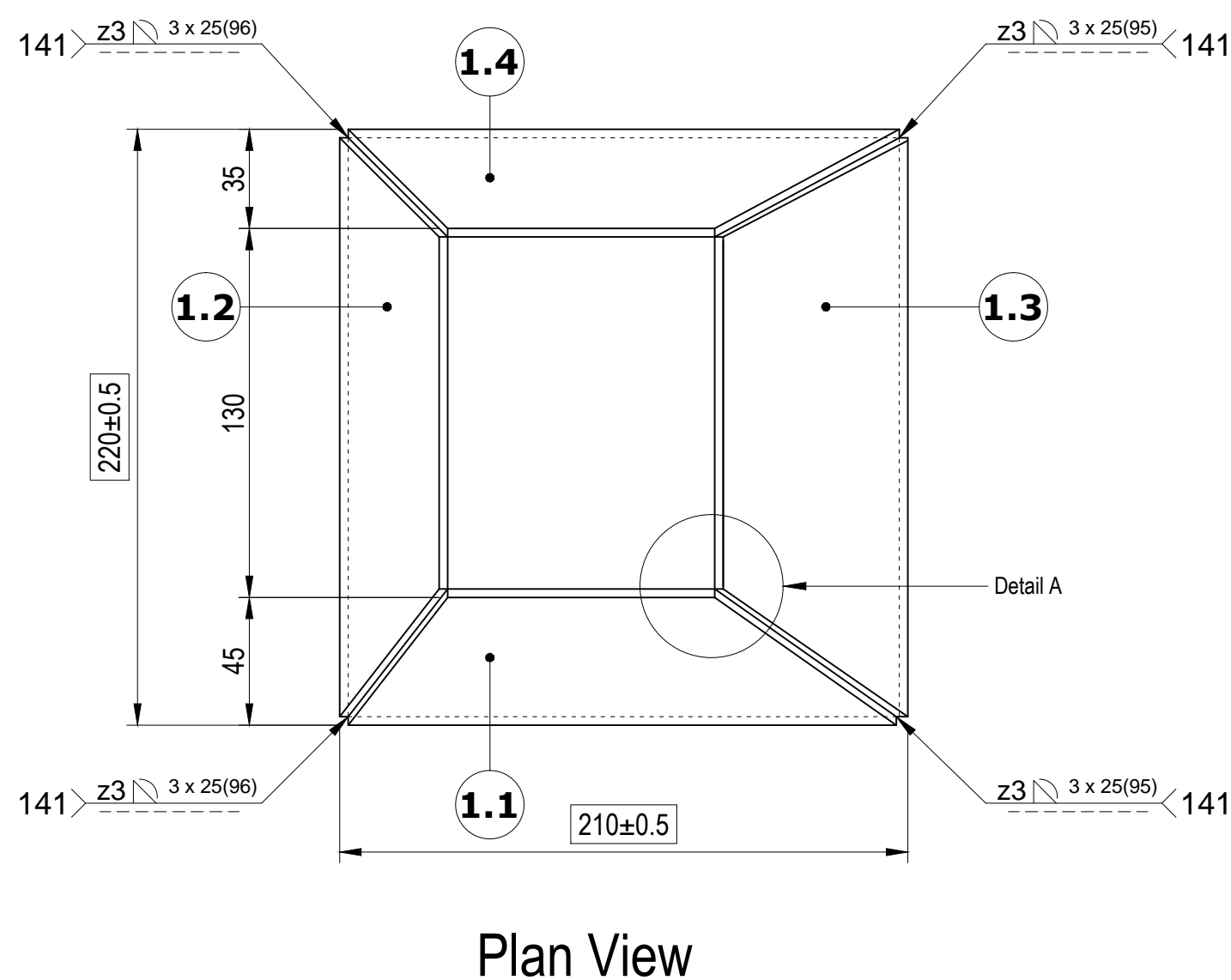


# Module 1



Part detail showing the position of all assessment points.

Note: Where a vernier calipers is being used to measure a width, the full length of the vernier's blade will be used.



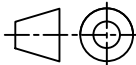
DETAIL A

Joint fit-up for all 4 corners of transition Piece

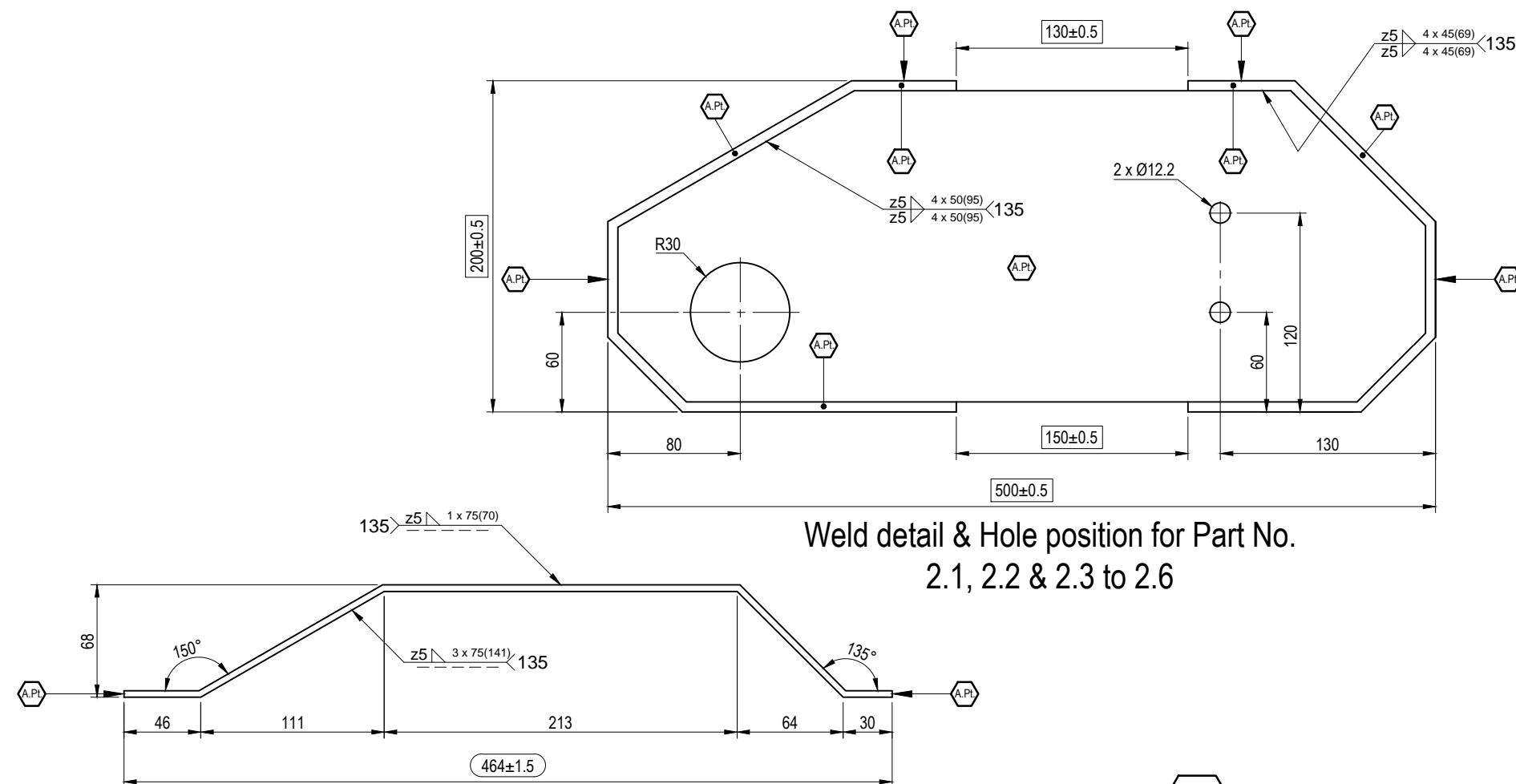
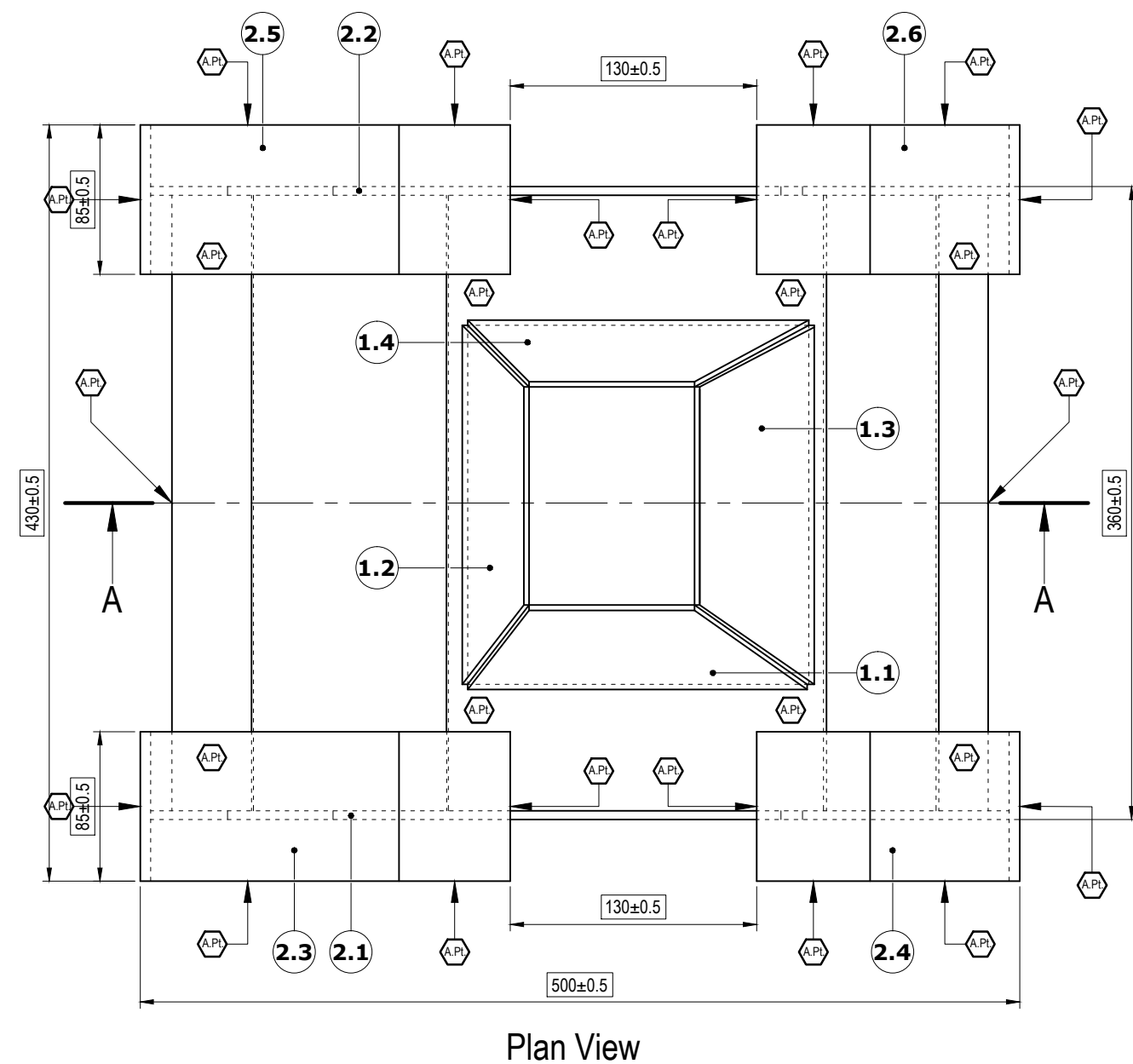
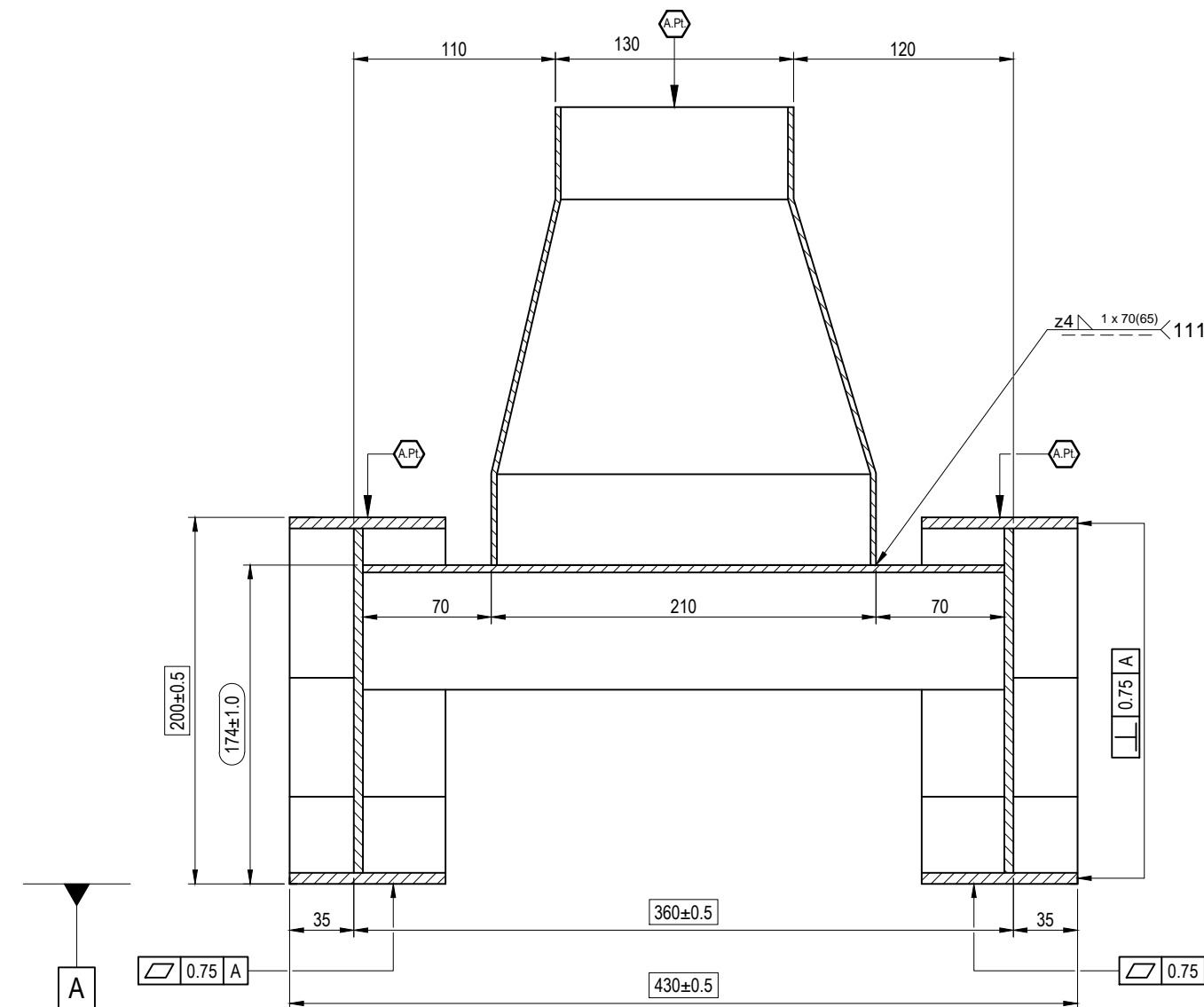
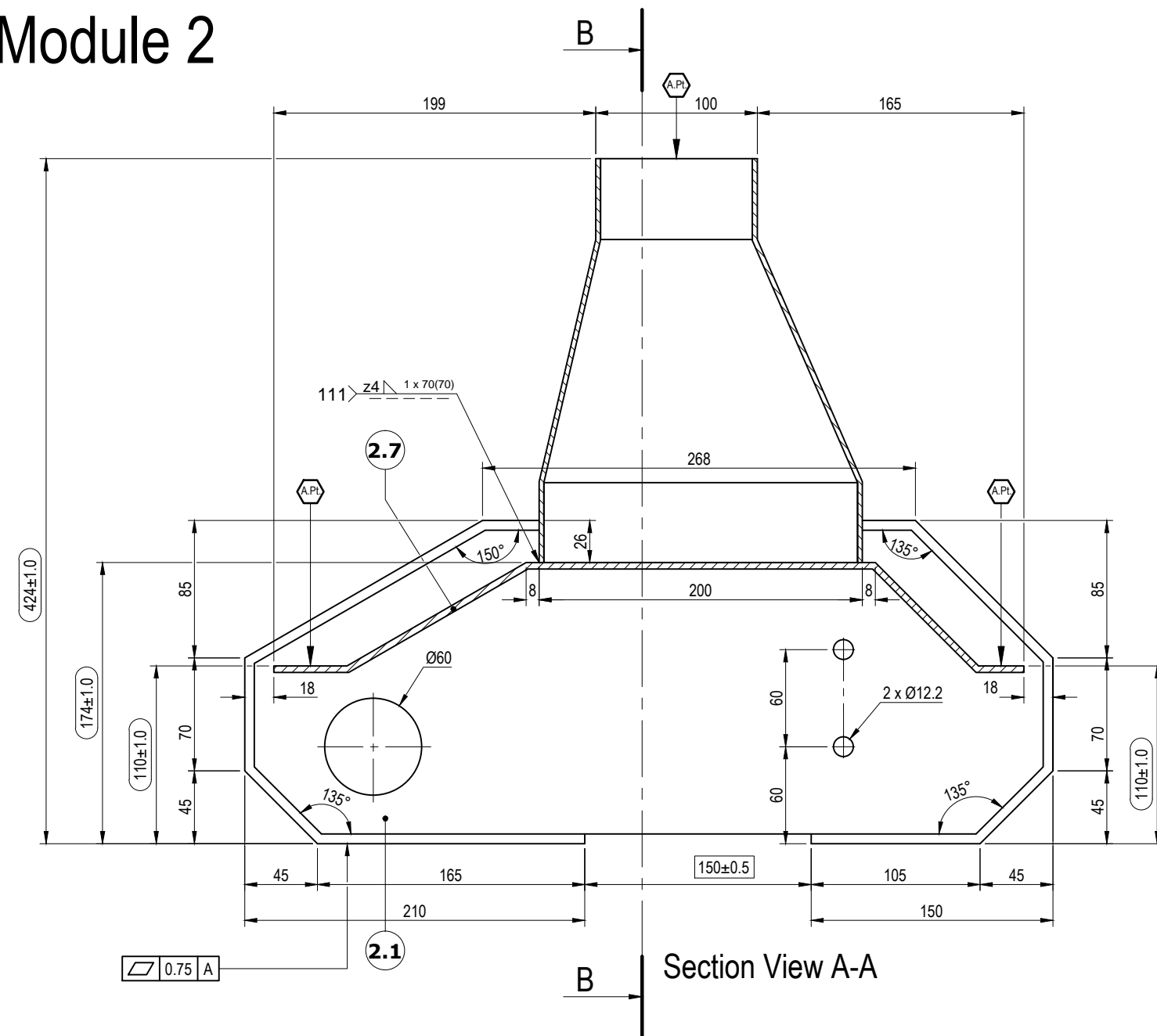
 Location of Assessment Points

Test Project for the 42<sup>nd</sup> WorldSkills Competition in Leipzig, Germany 2013.  
Copyright © 2013 WorldSkills International.  
All Rights Reserved.



Skill: 42 - Construction Metal Works				
Scale: NA	Date: 25.05.2012	Paper: A2		
Drawn / Design by: Tim O'Halloran			Drawing No: WSC2013_TP42_IE_01_EN	
Description: Excavator			Rev: 1.4	Page: 1 of 5
			Appd:	Sign:

# Module 2




Detail of Part No. 2.7  
Weld Symbols indicate welding of Part No. 2.7  
to Part No. 2.1 & 2.2

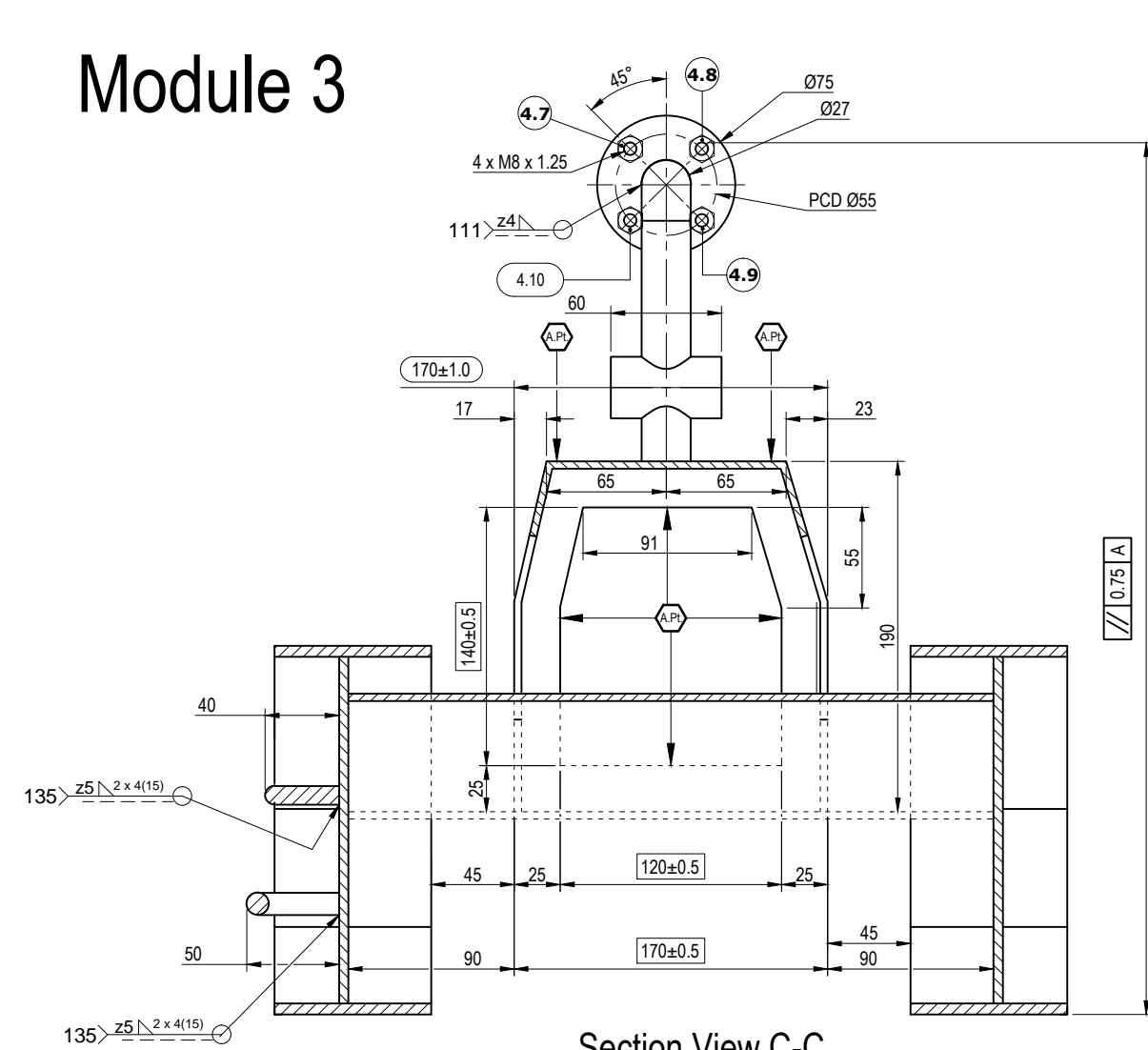
A.Pt. Location of Assessment Points

All drilled holes sizes in 2.1 and 2.2 will be determined by round bar size used for competition.

Test Project for the 42<sup>nd</sup> WorldSkills  
Competition in Leipzig, Germany 2013.  
Copyright © 2013 WorldSkills International.  
All Rights Reserved.

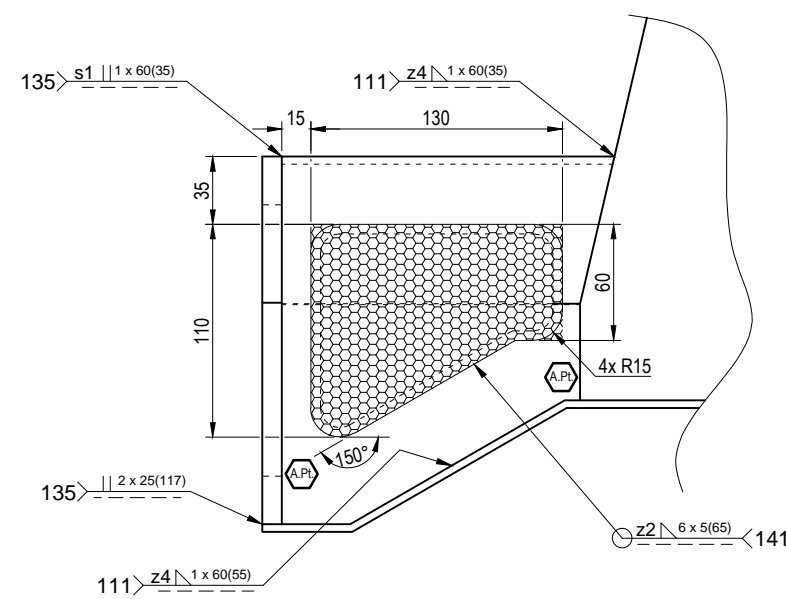
Skill: 42 - Construction Metal Works				
Scale: NA	Date: 25.05.2012	Paper: A2		
Drawn / Design by: Tim O'Halloran			Drawing No: WSC2013_TP42_IE_02_EN	
Description: Excavator			Rev: 1.4	Page: 2 of 5
			Appd:	Sign:

# Module 3

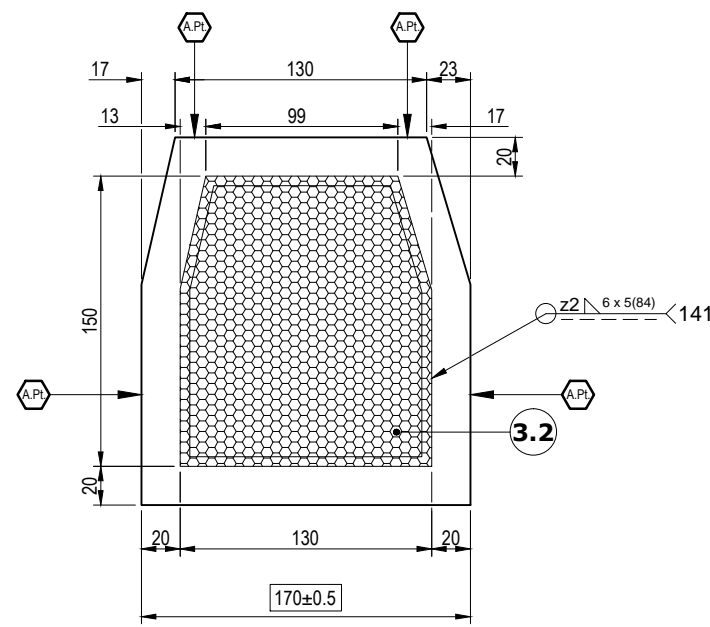


Section View C-C

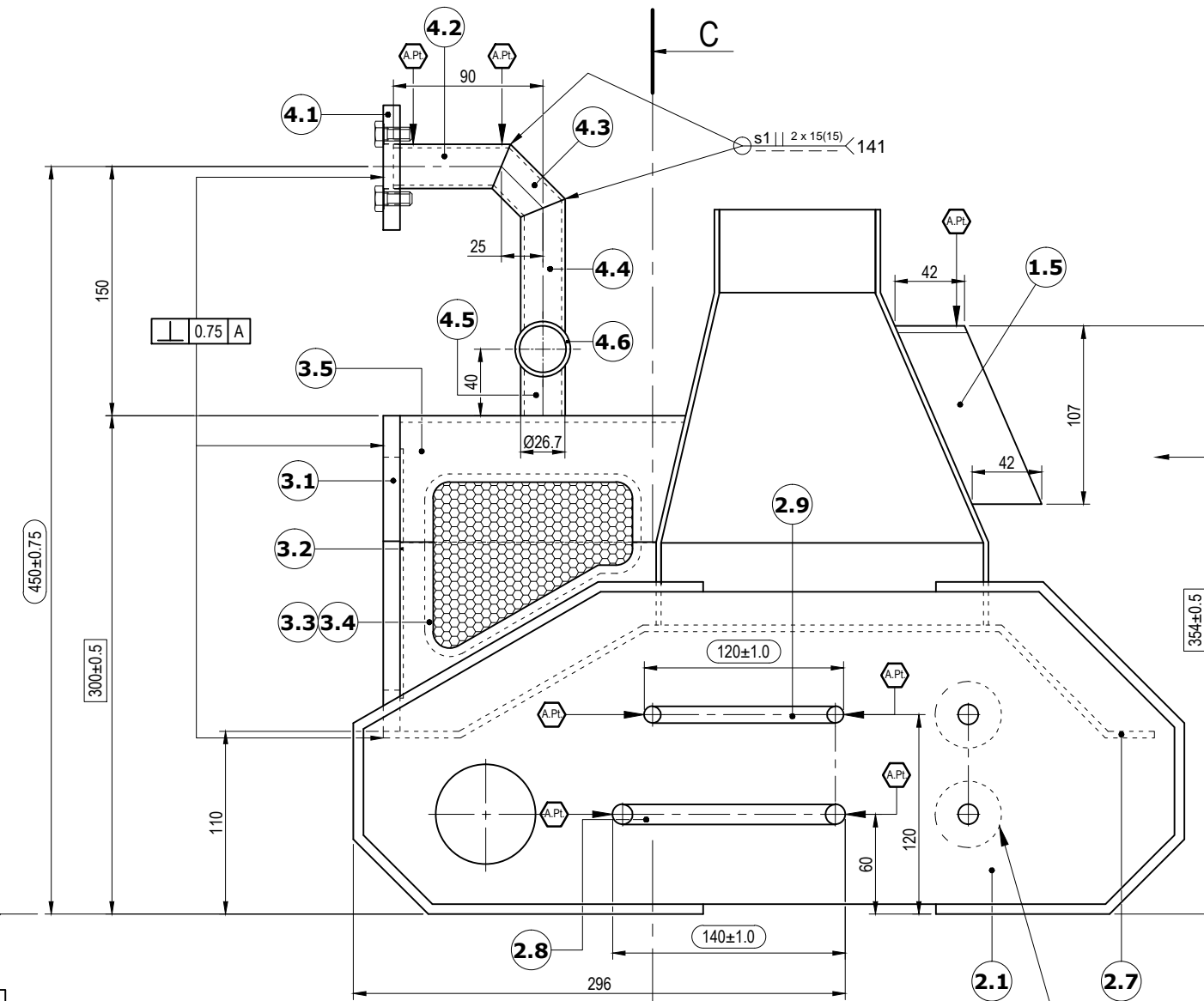
Note: Hidden detail is applied to section view to clarify Part No. 3.1  
For clarity Part No. 3.2, 3.3 & 3.4 have been omitted



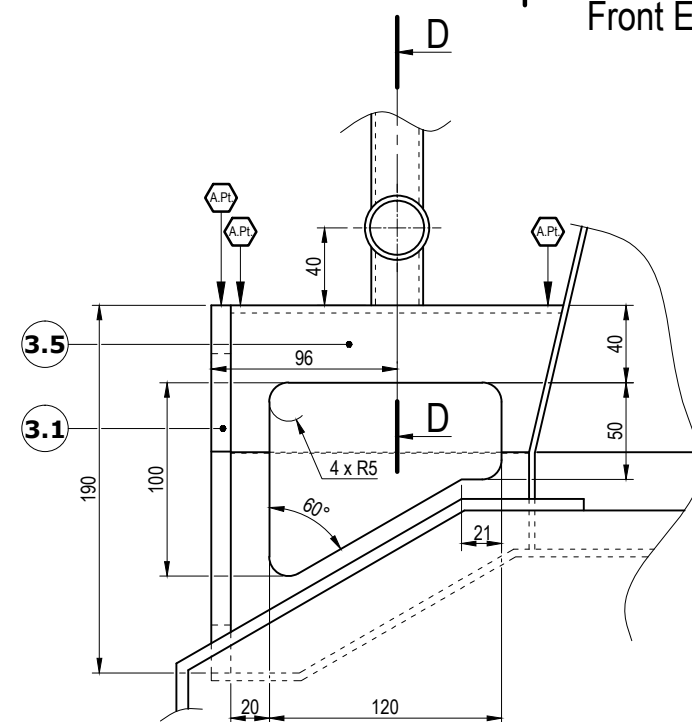
Detail of grill for Part No. 3.3 & 3.4



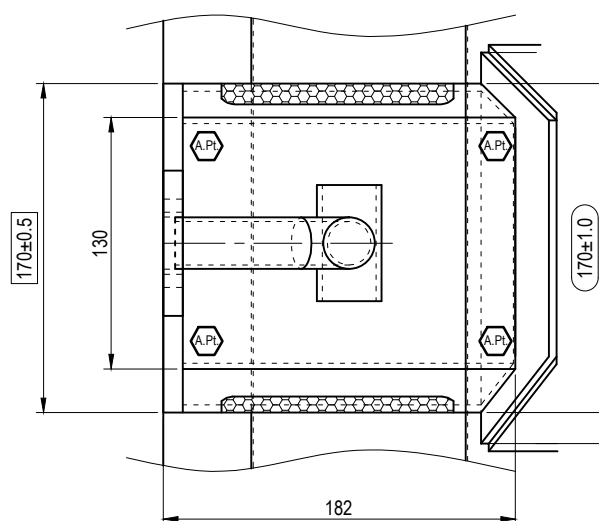
Detail of grill for Part No. 3.2



Front Elevation

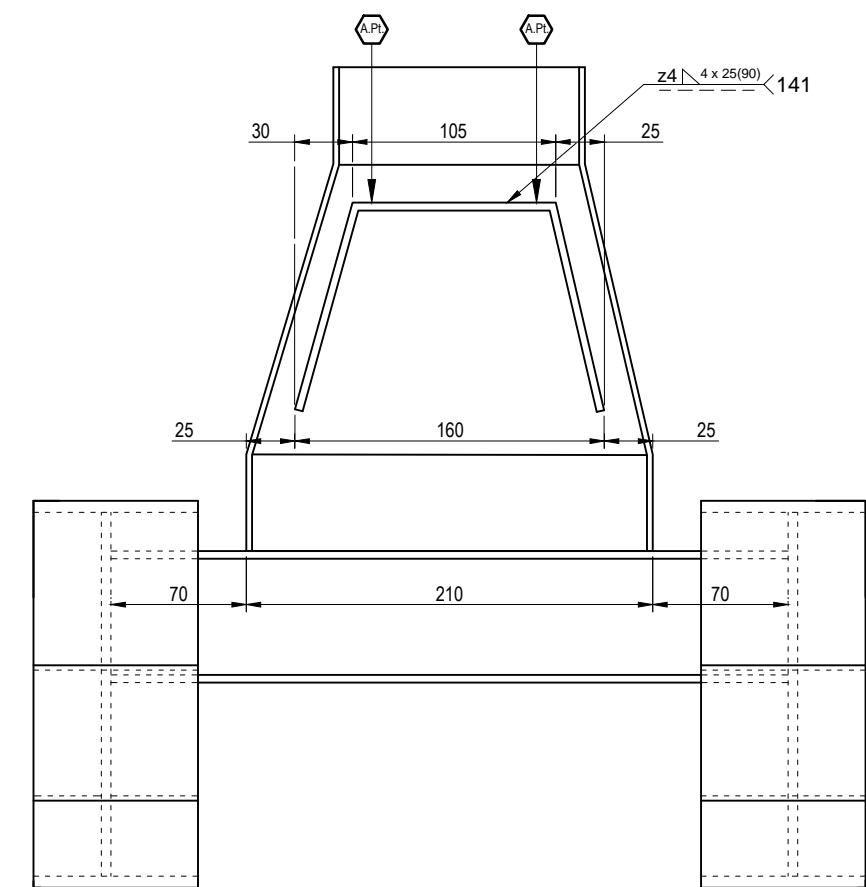


Detail for Part No. 3.5 & Part No. 4.4, 4.5 & 4.6  
Note: For clarity Part Nos. 3.3 & 3.4 have been omitted



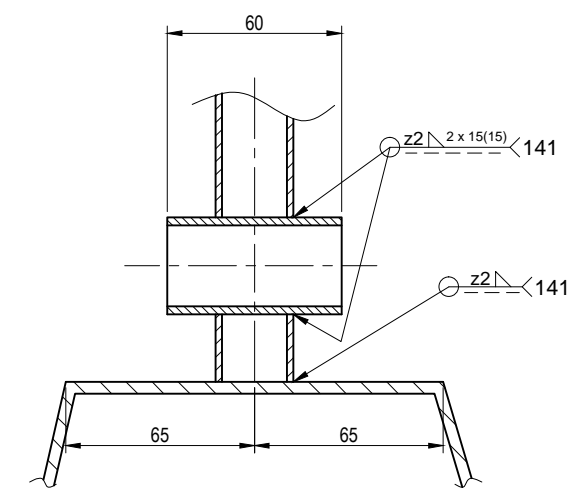
Plan View

View A



View A  
View taken from Arrow A showing window  
and frame detail on Part No. 1.3


Note: 5.3, 5.12 and 5.4, 5.13 are optional to be attach in Module 3



Section View D-D  
Note: View shown not to scale

A.Pt. Location of Assessment Points

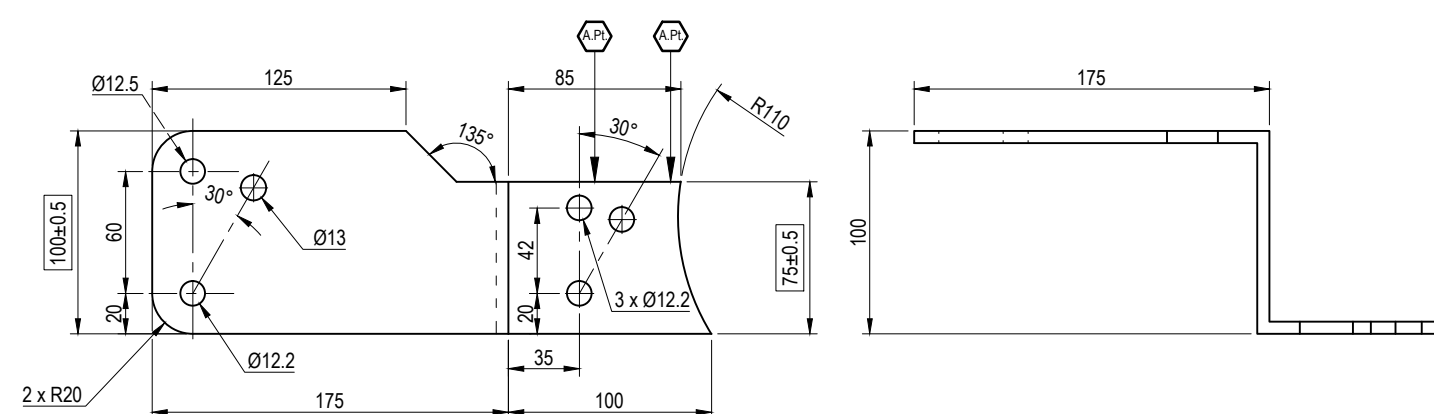
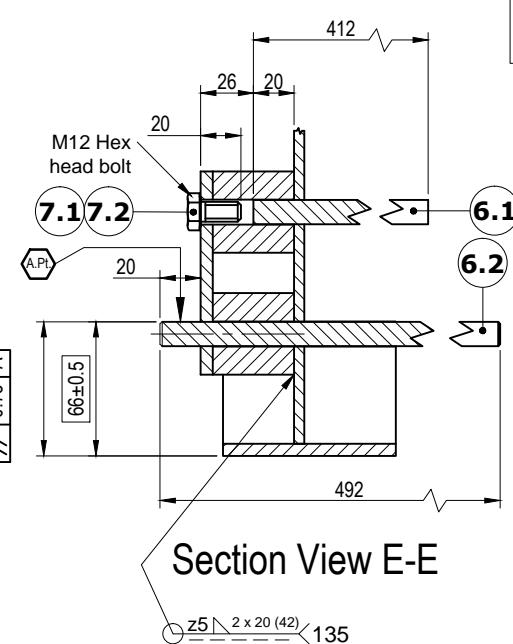
Test Project for the 42<sup>nd</sup> WorldSkills  
Competition in Leipzig, Germany 2013.  
Copyright © 2013 WorldSkills International.  
All Rights Reserved.

Skill: 42 - Construction Metal Works			
Scale: NA	Date: 25.05.2012	Paper: A2	
Drawn / Design by: Tim O'Halloran			Drawing No: WSC2013_TP42_IE_03_EN
Description: Excavator			Rev: 1.4
			Page: 3 of 5
			Appd:
			Sign:

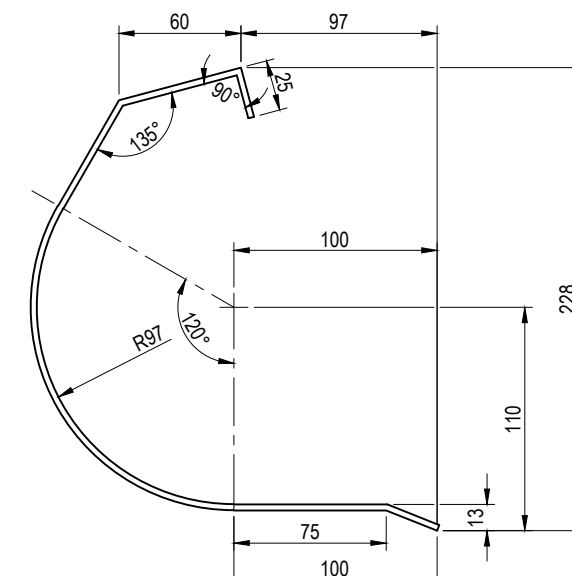
Technical drawings of two mechanical parts, 5.3 and 5.4, with dimensions and annotations.

**Part 5.3:** A rectangular plate with a width of 40 and a height of 40. It has a central hole with a diameter of  $\varnothing 12.2$ . A dimension line indicates a distance of 5.12 from the left edge to the center of the hole. A note "5.3" is circled and points to the top-left corner.

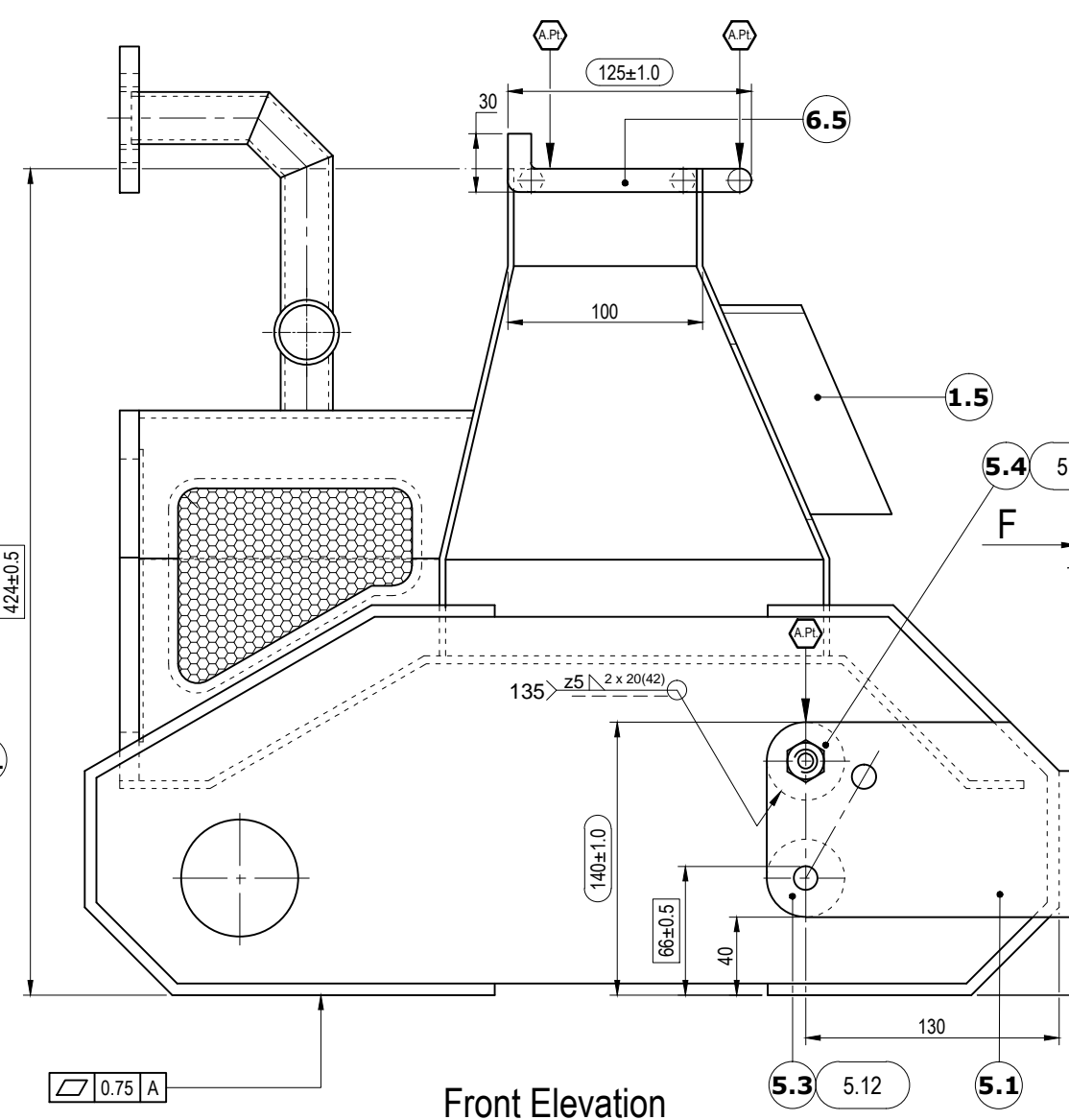
**Part 5.4:** A rectangular plate with a width of 40 and a height of 40. It has a central hole with a diameter of  $\varnothing 12.2$ . A dimension line indicates a distance of 5.13 from the left edge to the center of the hole. A note "5.4" is circled and points to the top-left corner. A dimension line indicates a distance of 20 from the right edge to the center of the hole. A note "M12 Thread" is circled and points to the right edge of the plate. A dimension line indicates a distance of 5.40 from the left edge to the center of the hole.



### Detail for Part No.5.1 & 5.2

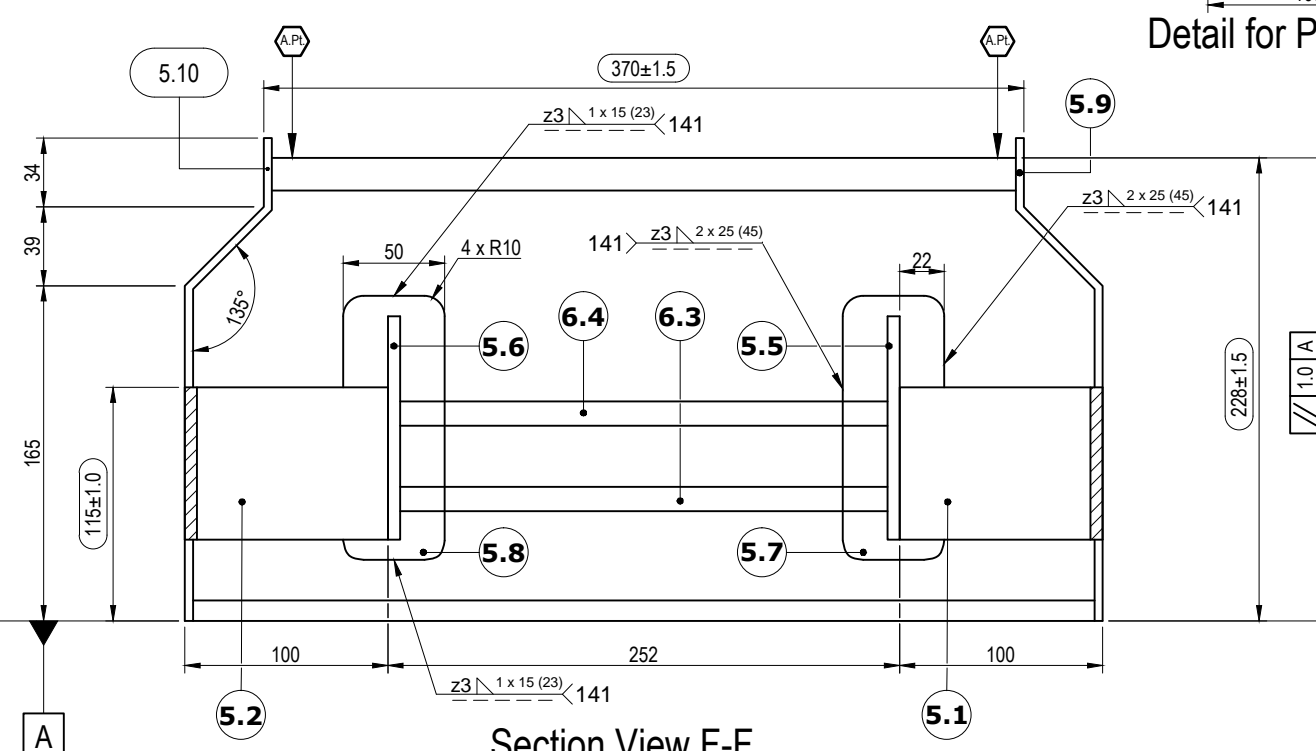
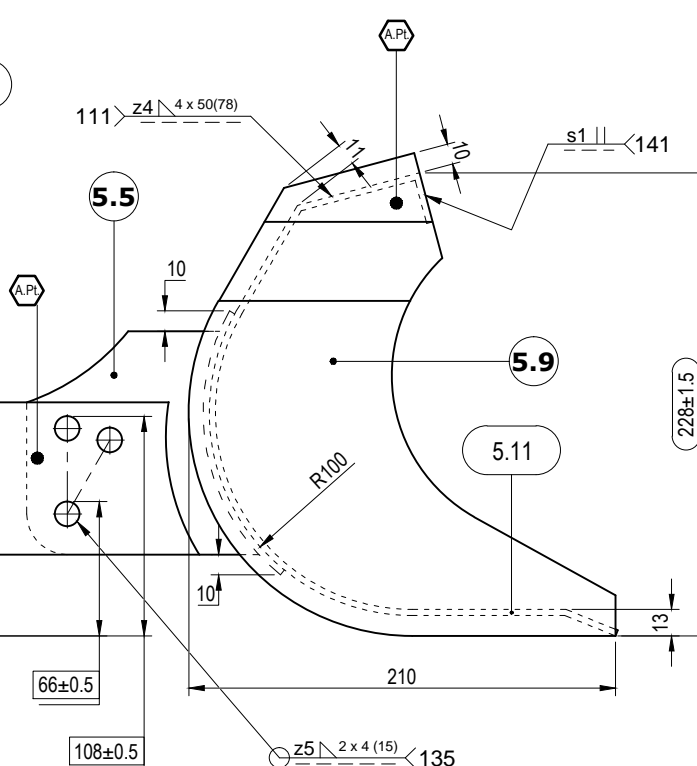


Detail for Part No.5.11

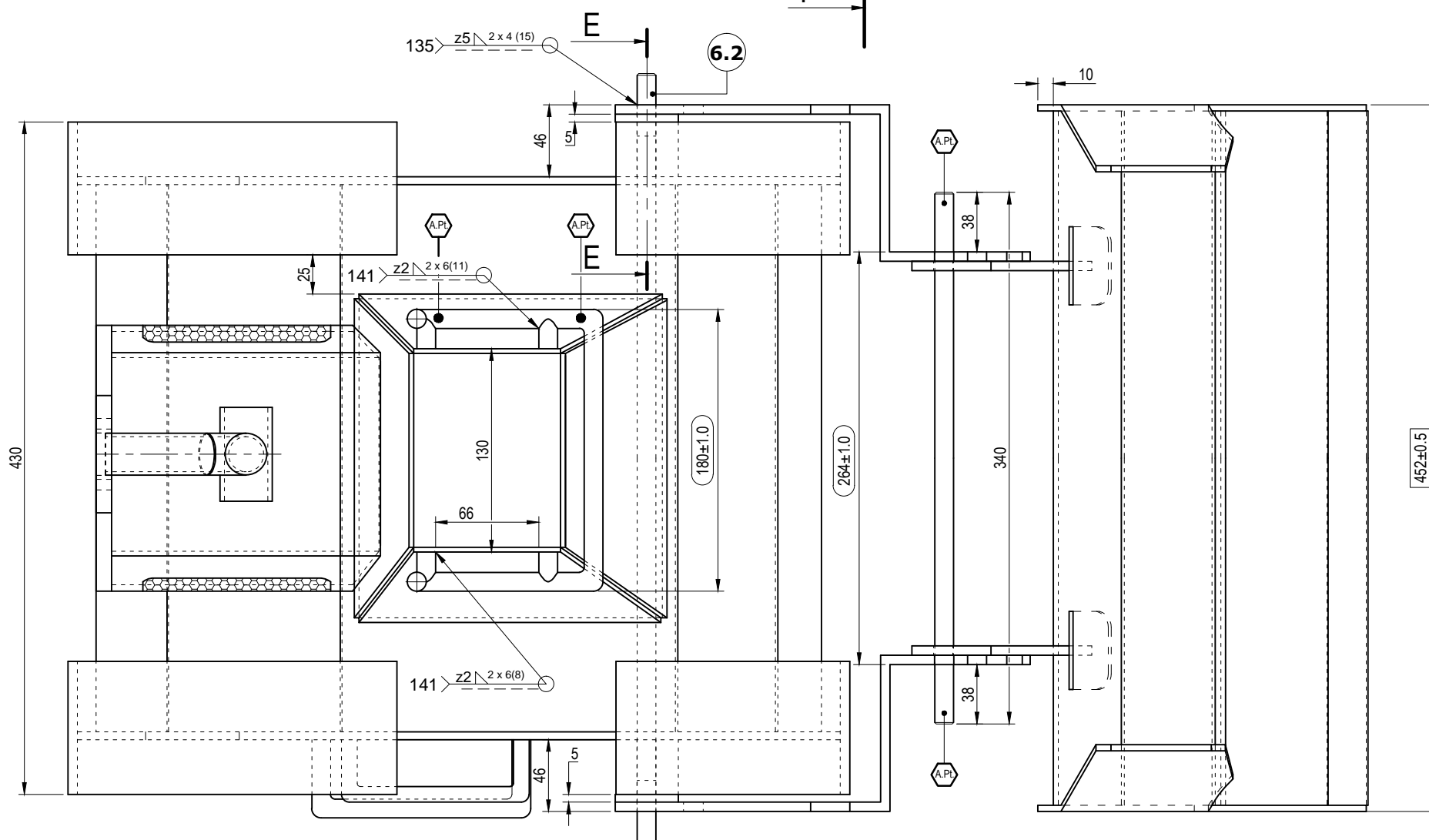


### Front Elevation

*Note: For Clarity Part No. 2.8 & 2.9 have been omitted*

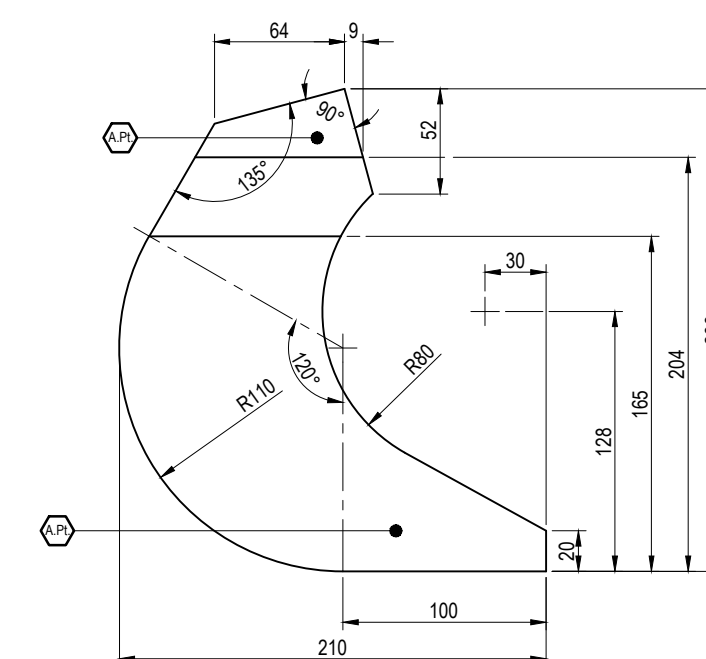


Section View F-F

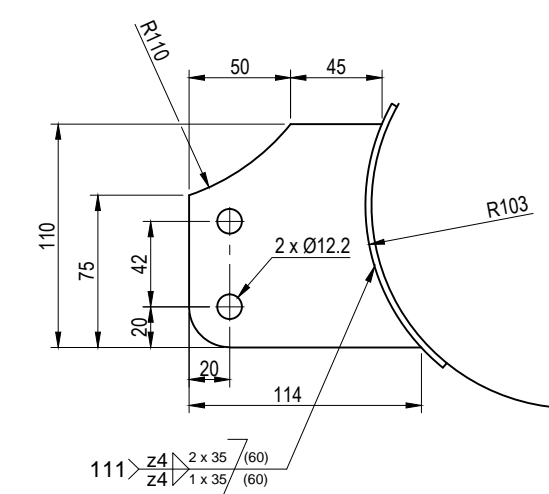


### Plan View

*Note: For clarity Part No. 1.5, 7.1 & 7.2 has been omitted*



Front Elevation  
&  
Detail for Part No.5.9 & 5.10



Detail for Part No.5.5, 5.6 & 5.7, 5.8

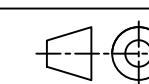
Test Project for the 42<sup>nd</sup> WorldSkills  
Competition in Leipzig, Germany 2013.  
Copyright © 2013 WorldSkills International.  
All Rights Reserved.

Skill: 42 - Construction Metal Works
--------------------------------------

Scale:NA

Drawn / Design by: Tim O'Halloran

Description: Excavator
------------------------



Drawing No: WSC2013_TP42_IE_04_EN
-----------------------------------

	Rev: 1.4
--	----------

Page: 4 of 5

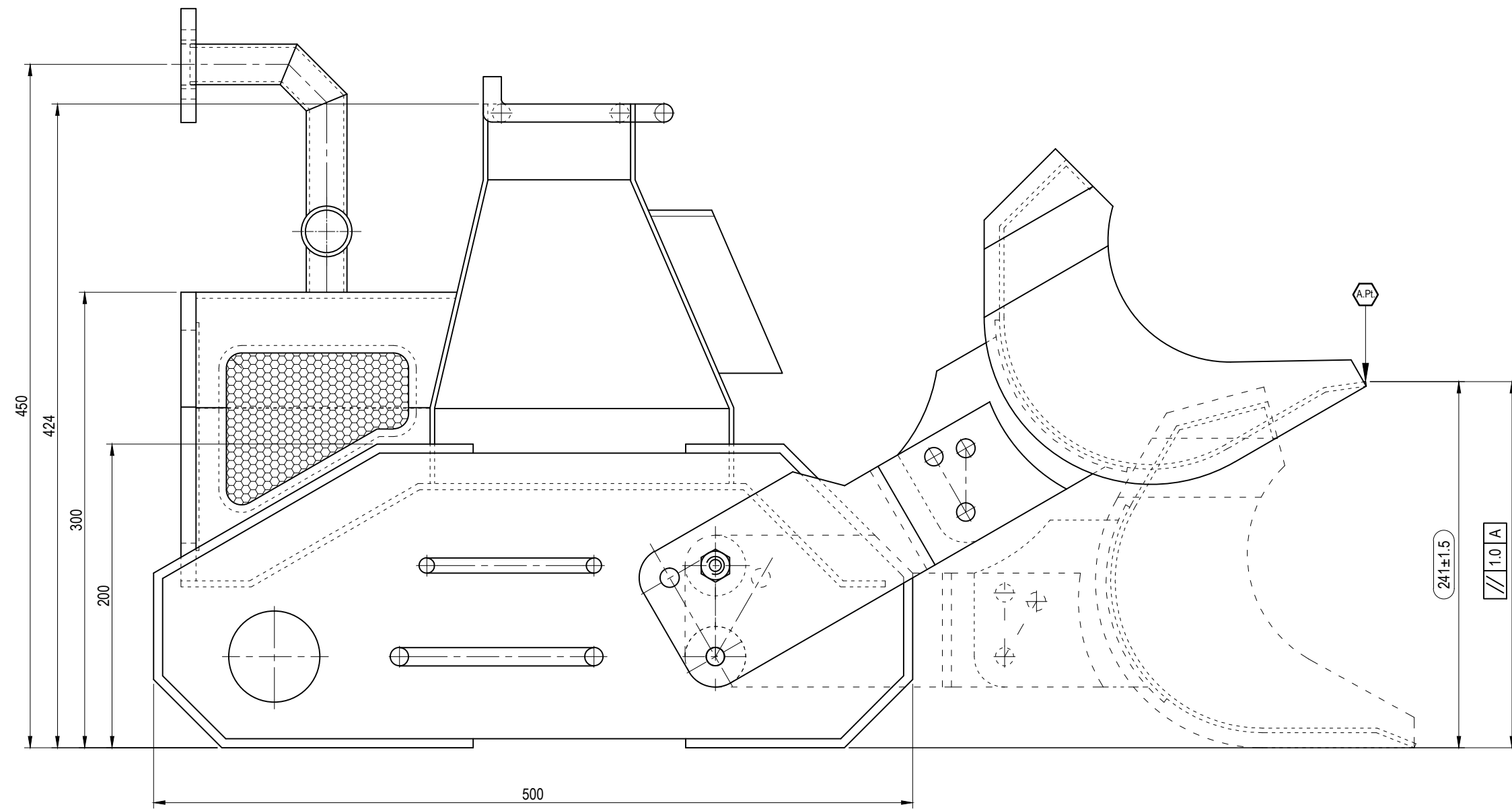
Appd:

	Sign:
--	-------

*All drilled holes sizes in 5.1 and 5.2 and 5.5 and 5.6 will be determined by round bar size used for competition.*

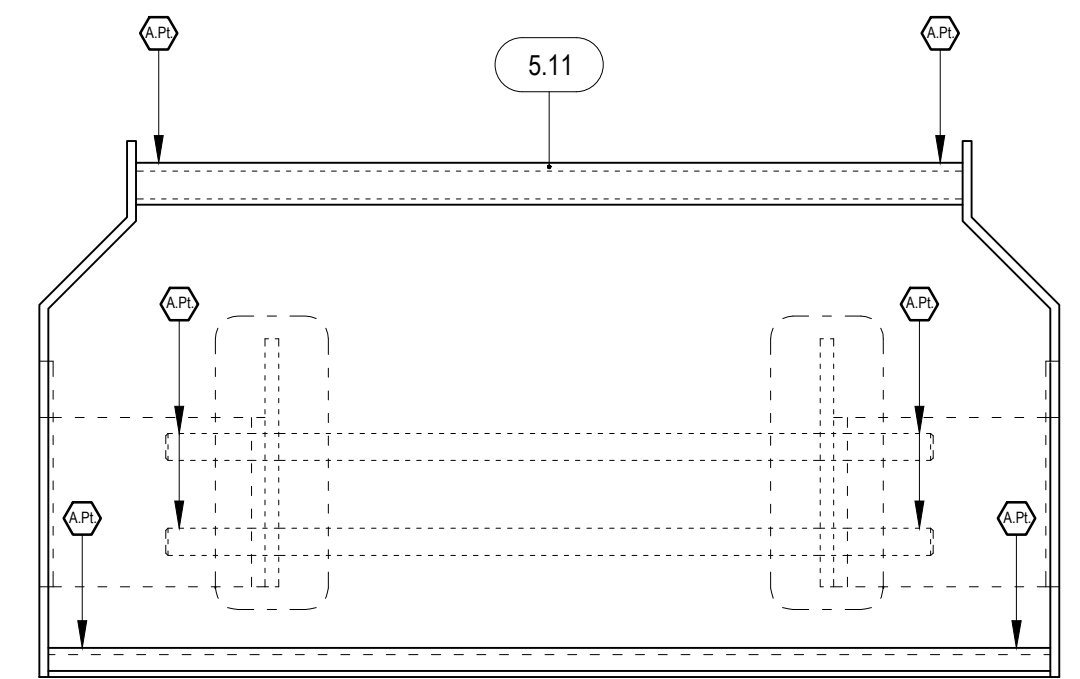
### Location of Assessment Points

# Module 4 - Function



Front Elevation

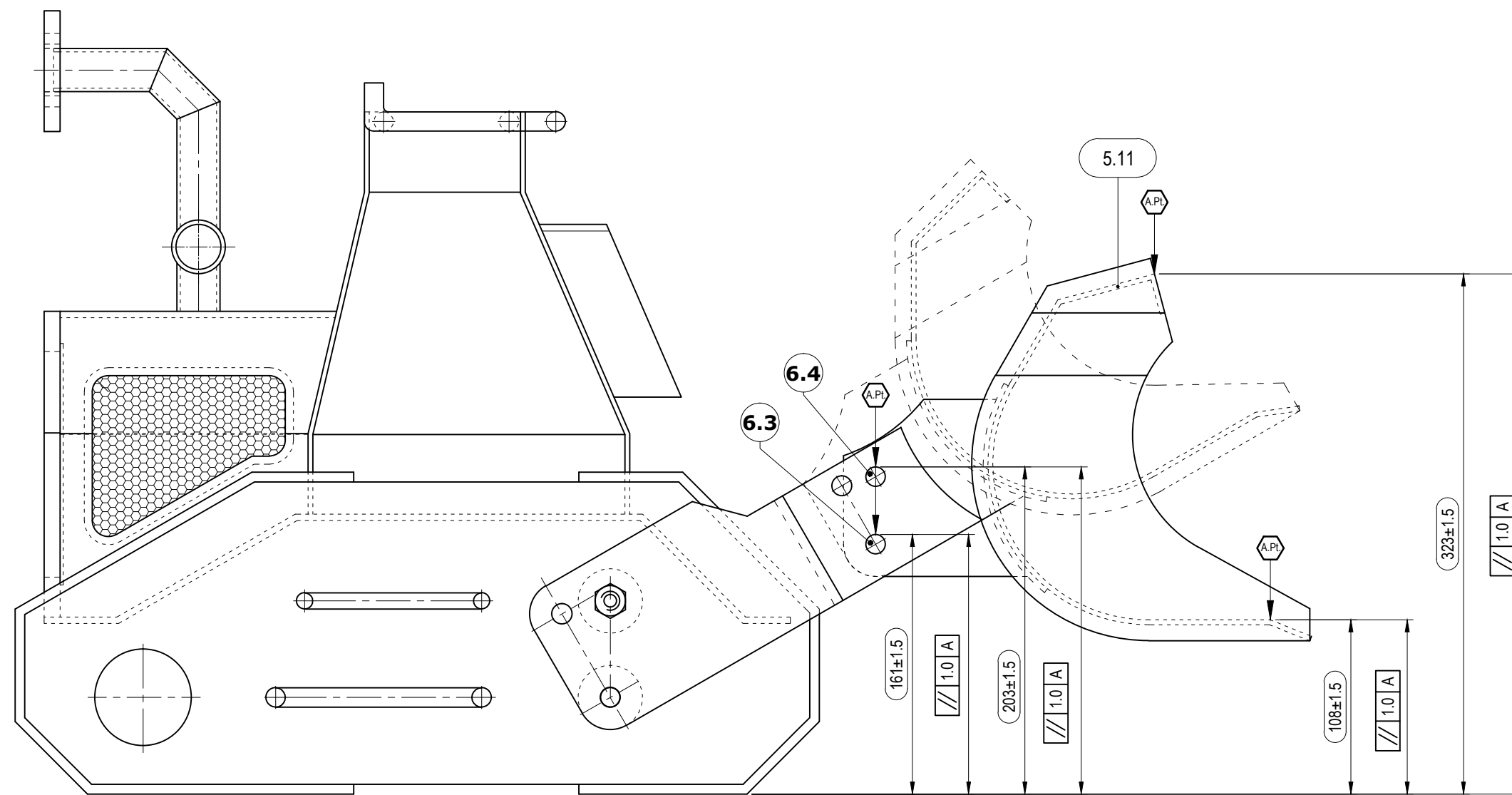
View B



View B

View taken from Arrow B showing location of Assessment Points

*All drilled holes sizes in 5.1 and 5.2 and 5.5 and 5.6 will be determined by round bar size used for competition.*



Front Elevation

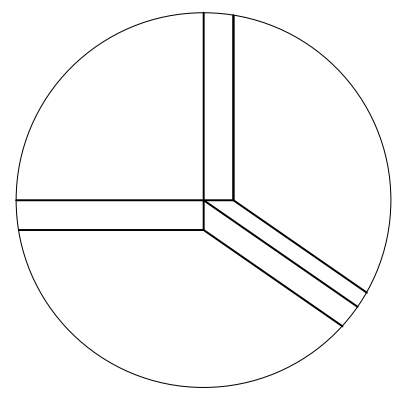
A.Pt. Location of Assessment Points

Test Project for the 42<sup>nd</sup> WorldSkills  
Competition in Leipzig, Germany 2013.  
Copyright © 2013 WorldSkills International.  
All Rights Reserved.



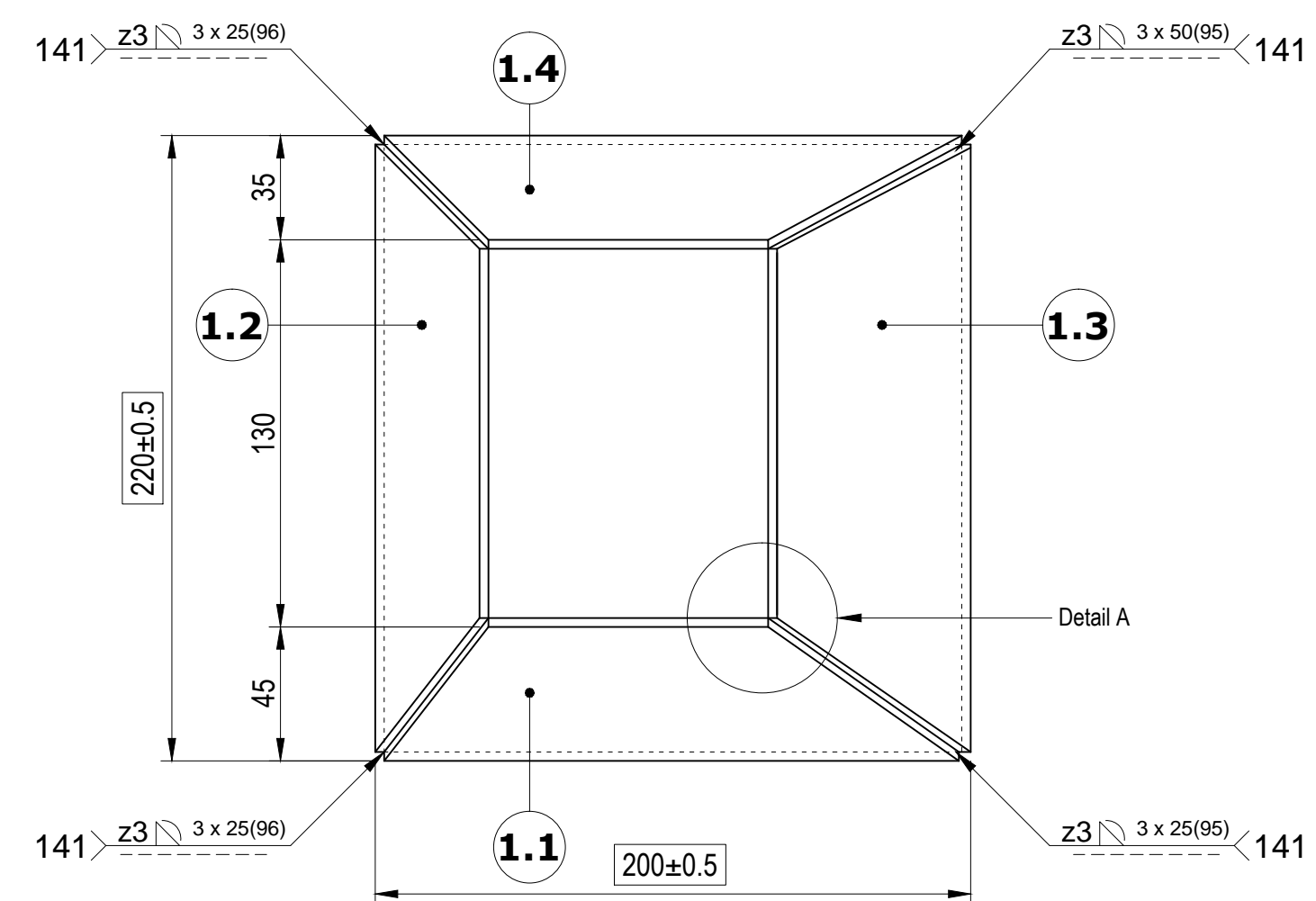
Skill: 42 - Construction Metal Works				
Scale: NA	Date: 25.05.2012	Paper: A2		
Drawn / Design by: Tim O'Halloran			Drawing No: WSC2013_TP42_IE_05_EN	
Description: Excavator			Rev: 1.4	Page: 5 of 5
Appd:			Sign:	

Module 1

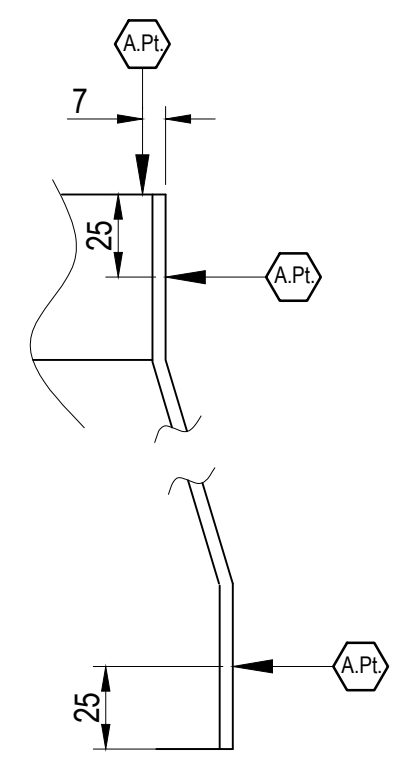


DETAIL A

Joint fit-up for all 4 corners of transition piece.

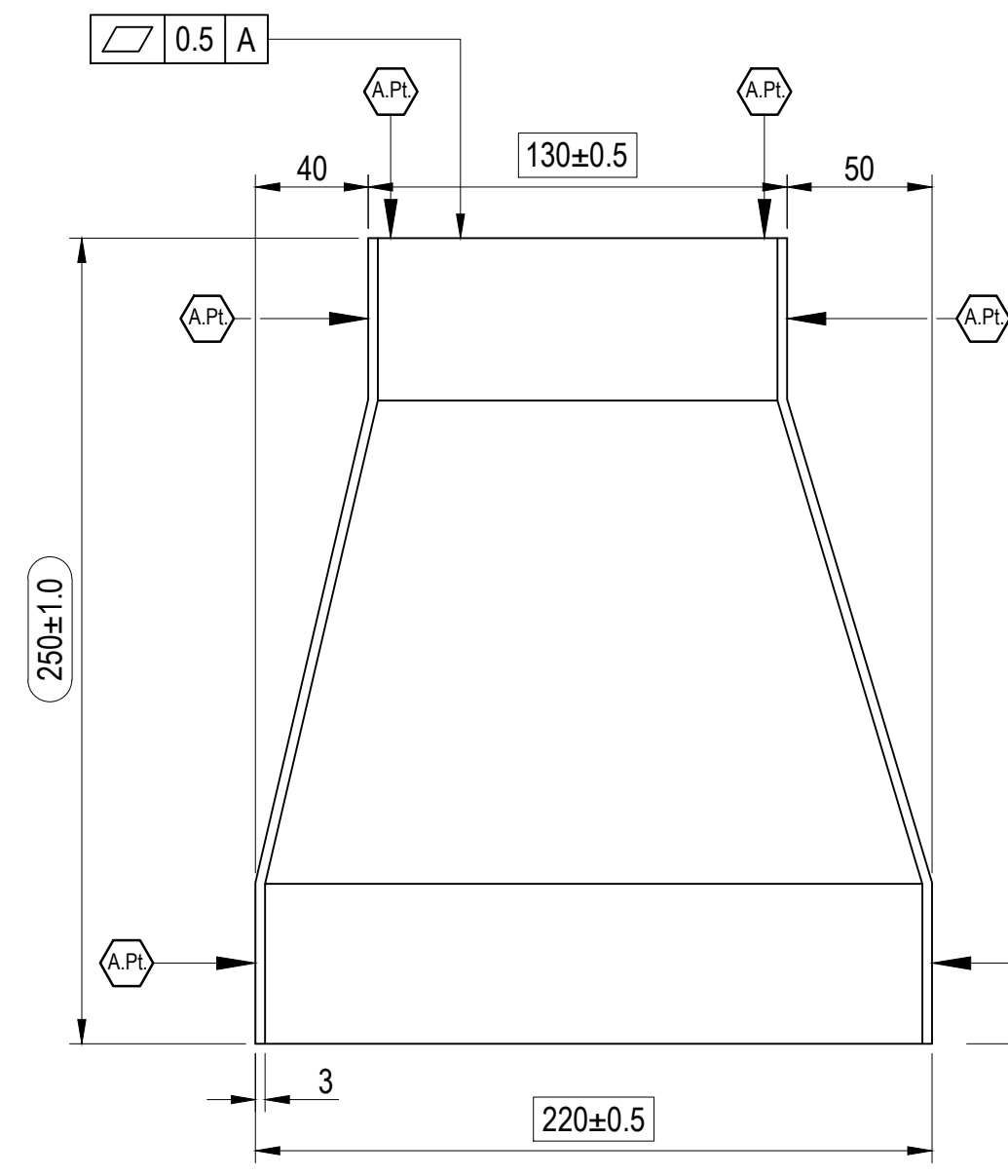


Plan View

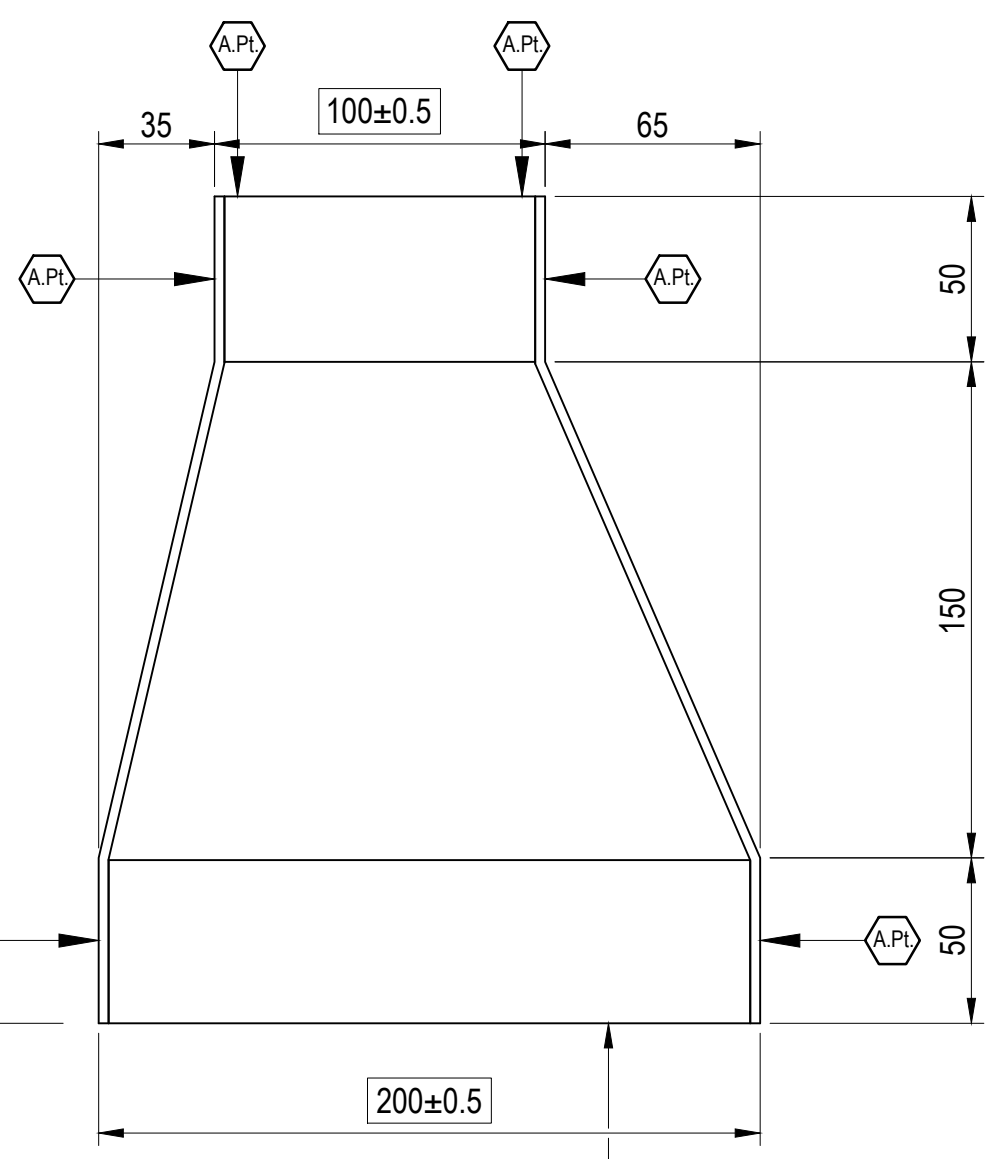


Part detail showing the position of all assessment points.

*Note: Where a vernier calipers is being used to measure a width, the full length of the vernier's blade will be used.*



End Elevation



Front Elevation

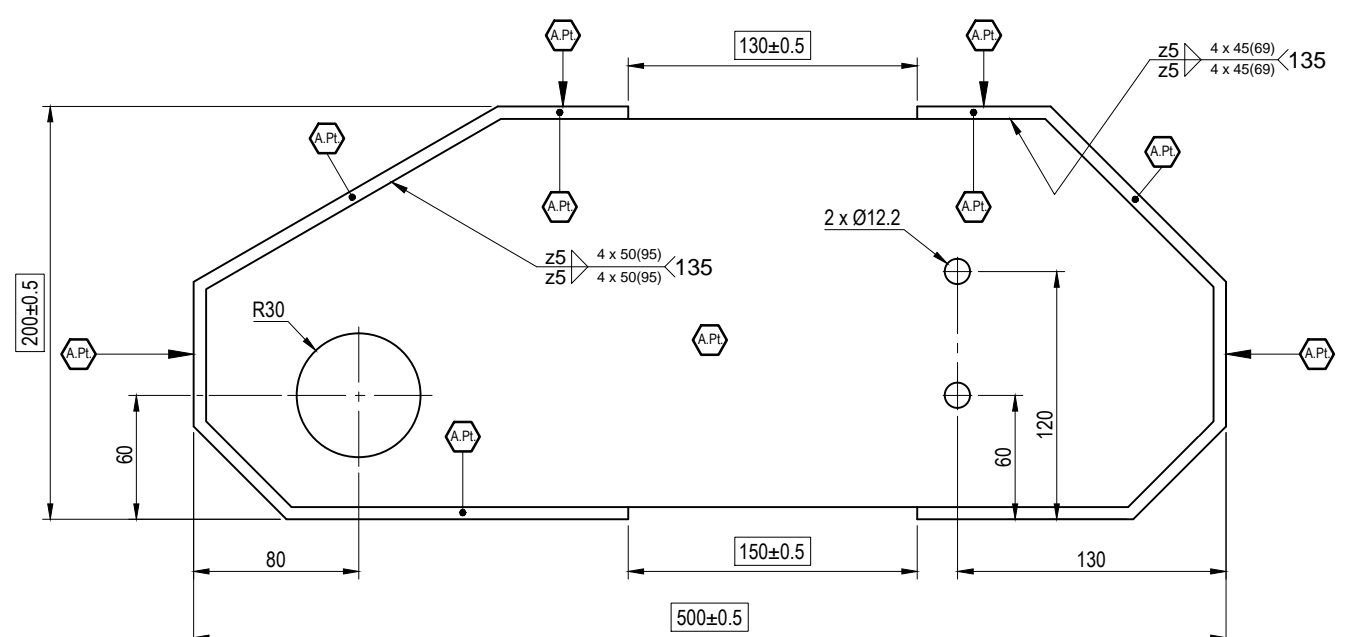
A.Pt. Location of Assessment Points

Test Project for the 42<sup>nd</sup> WorldSkills Competition in Leipzig, Germany 2013.  
Copyright © 2013 WorldSkills International.  
All Rights Reserved.

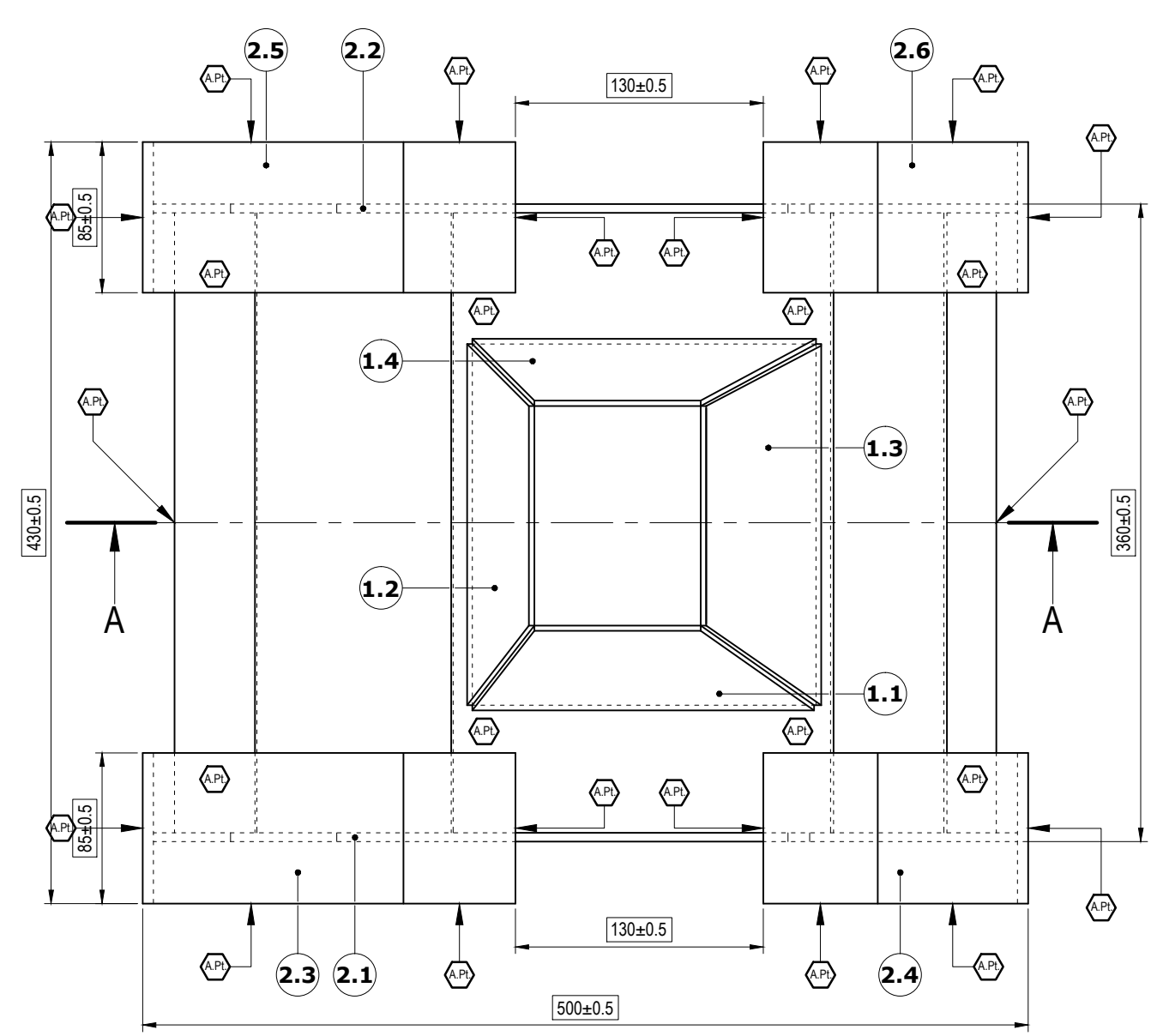


Skill: 42 - Construction Metal Works				
Scale: NA	Date: 25.05.2012	Paper: A2		
Drawn / Design by: Tim O'Halloran			Drawing No: WSC2013_TP42_IE_01_EN	
Description: Excavator			Rev: 1.4	Page: 1 of 5
			Appd:	Sign:

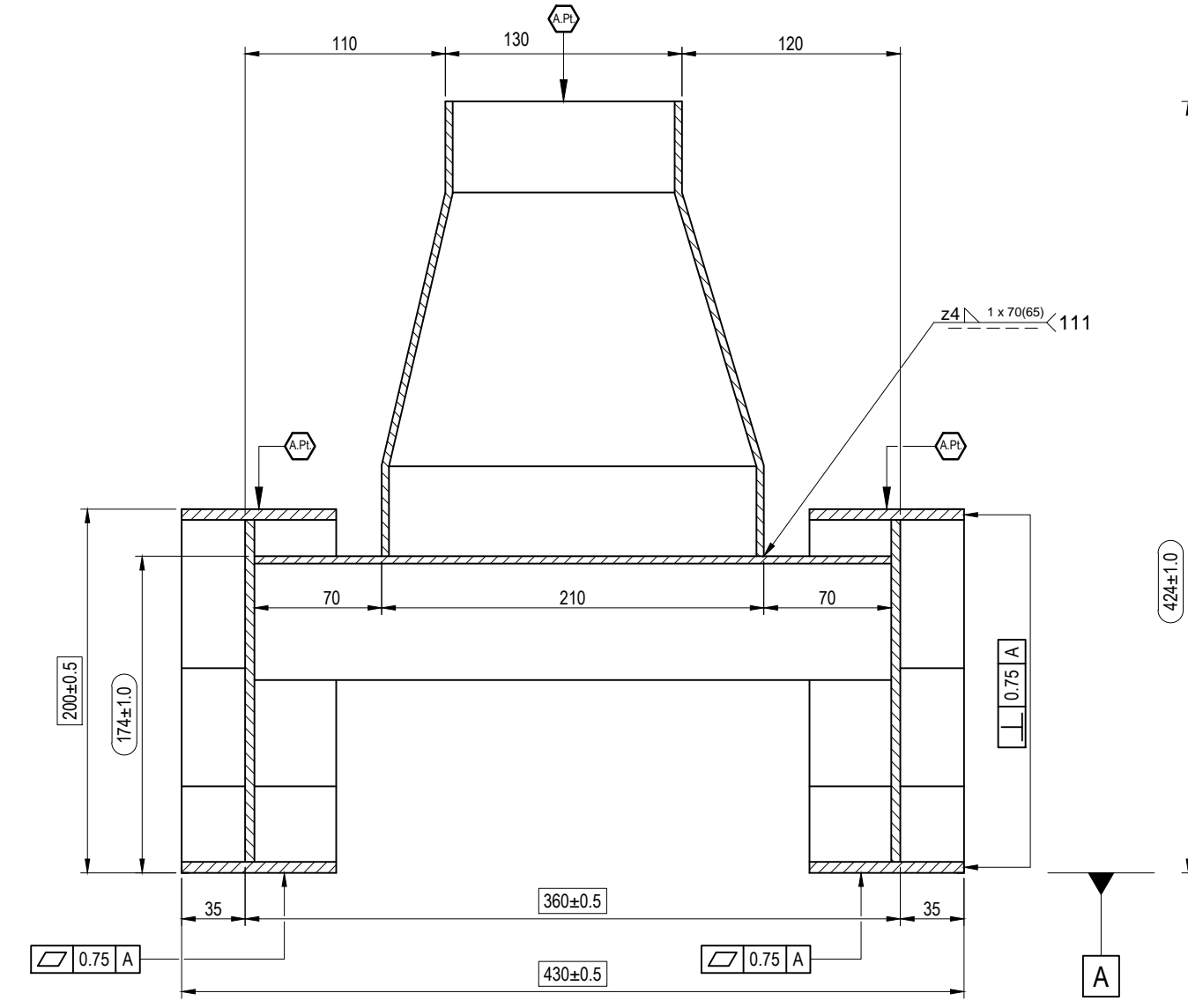
# Module 2



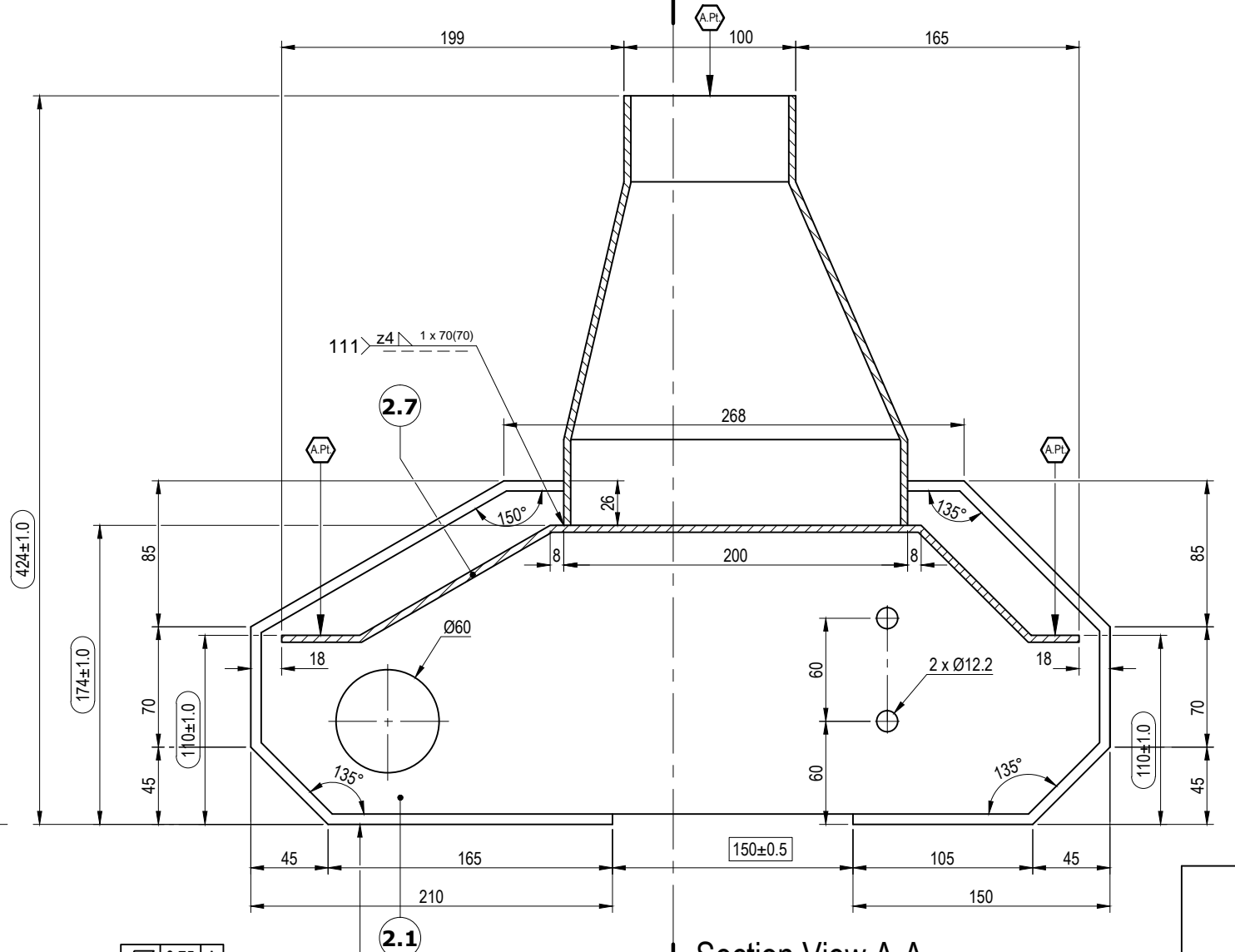
Weld detail & Hole position for Part No. 2.1, 2.2 & 2.3 to 2.6



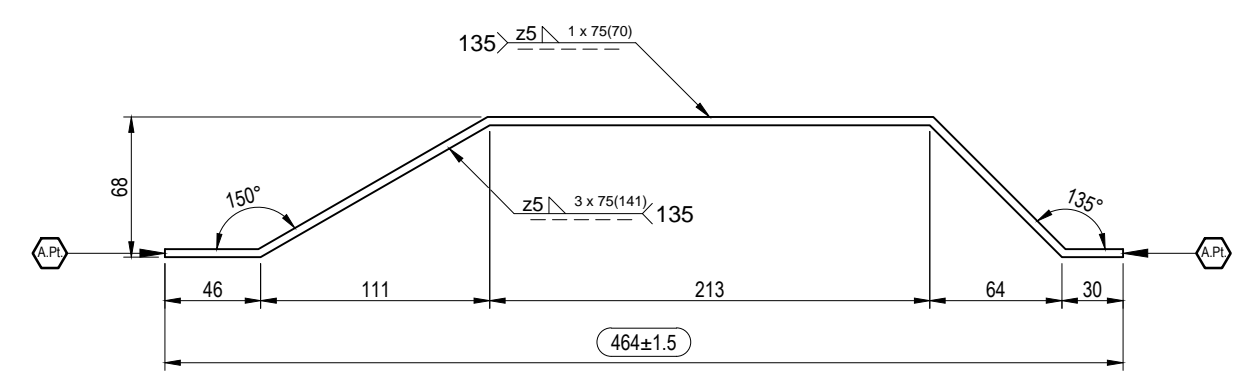
Plan View



Section View B-B



Section View A-A



Detail of Part No. 2.7  
Weld Symbols indicate welding of Part No. 2.7 to Part No. 2.1 & 2.2

A.Pt. Location of Assessment Points

All drilled holes sizes in 2.1 and 2.2 will be determined by round bar size used for competition.

Test Project for the 42<sup>nd</sup> WorldSkills Competition in Leipzig, Germany 2013. Copyright © 2013 WorldSkills International. All Rights Reserved.



Skill: 42 - Construction Metal Works				
Scale: NA	Date: 25.05.2012	Paper: A2		
Drawn / Design by: Tim O'Halloran			Drawing No: WSC2013_TP42_IE_02_EN	
Description: Excavator			Rev: 1.4	Page: 2 of 5
			Appd:	Sign:

A
B
C
D
E
F
G
H



C



F



H



D



F



H



100, —

Note: Hidden detail is applied to section view to clarify Part No. 3.1  
For clarity Part No. 3.2, 3.3 & 3.4 have been omitted

3, 5.12 and 5.4, 5.13 are optional to be attach in Module 3

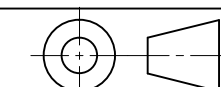
Test Project for the 42<sup>nd</sup> WorldSkills  
Competition in Leipzig, Germany 2013.  
Copyright © 2013 WorldSkills International.  
All Rights Reserved.

Skill: 42 - Construction Metal Works

Scale: NA

Drawn / Design by: Tim O'Halloran

Description: Excavator
------------------------



Drawing No: WSC2013\_TP42\_IE\_03\_EN

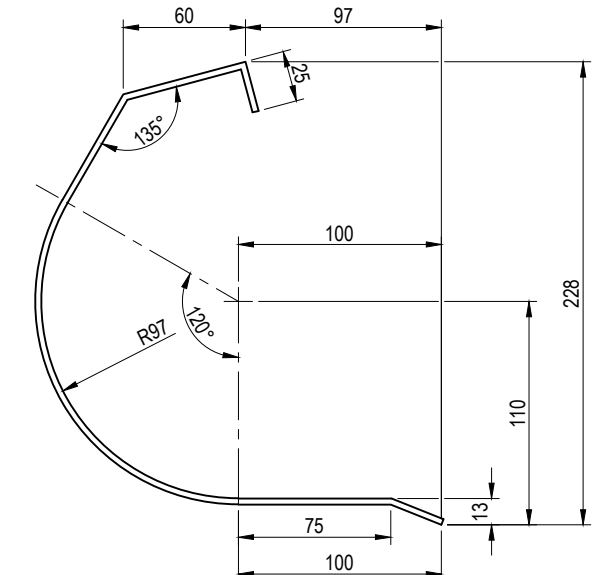
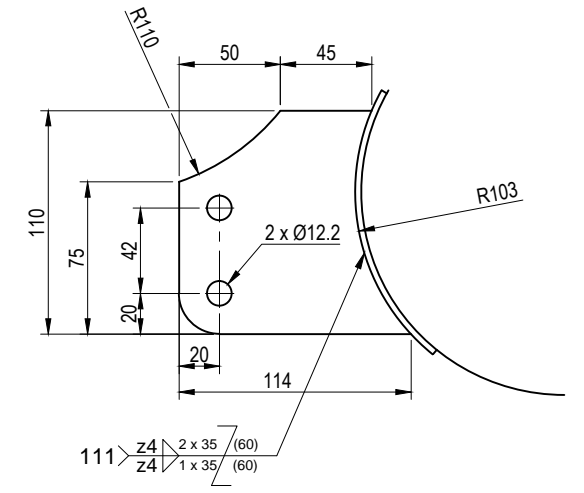
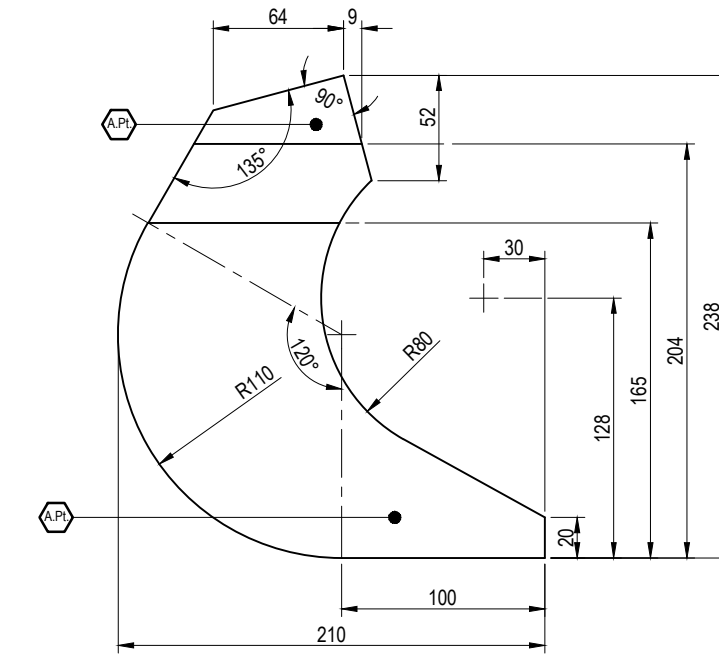
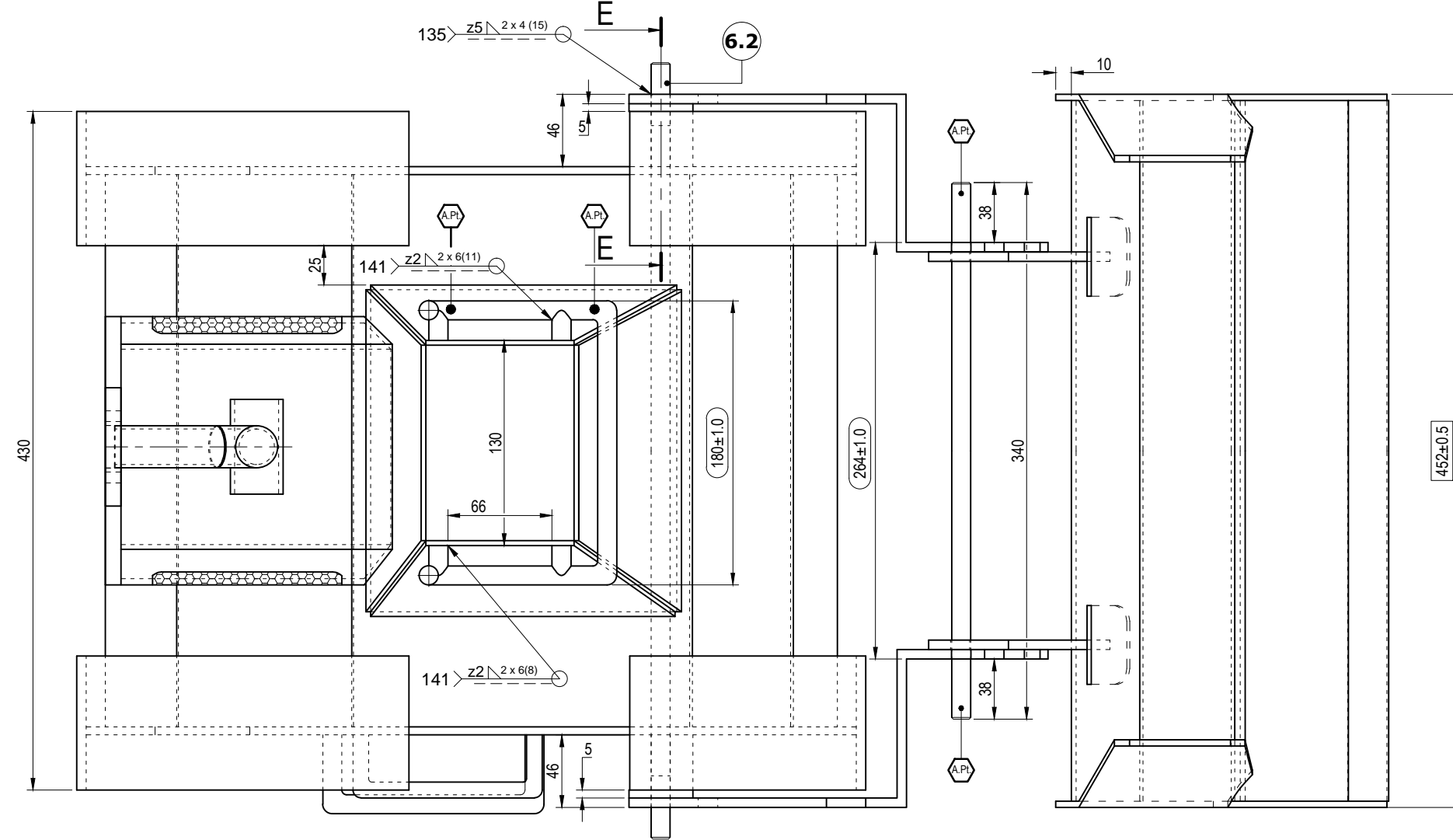
Rev: 1.4

Appd:

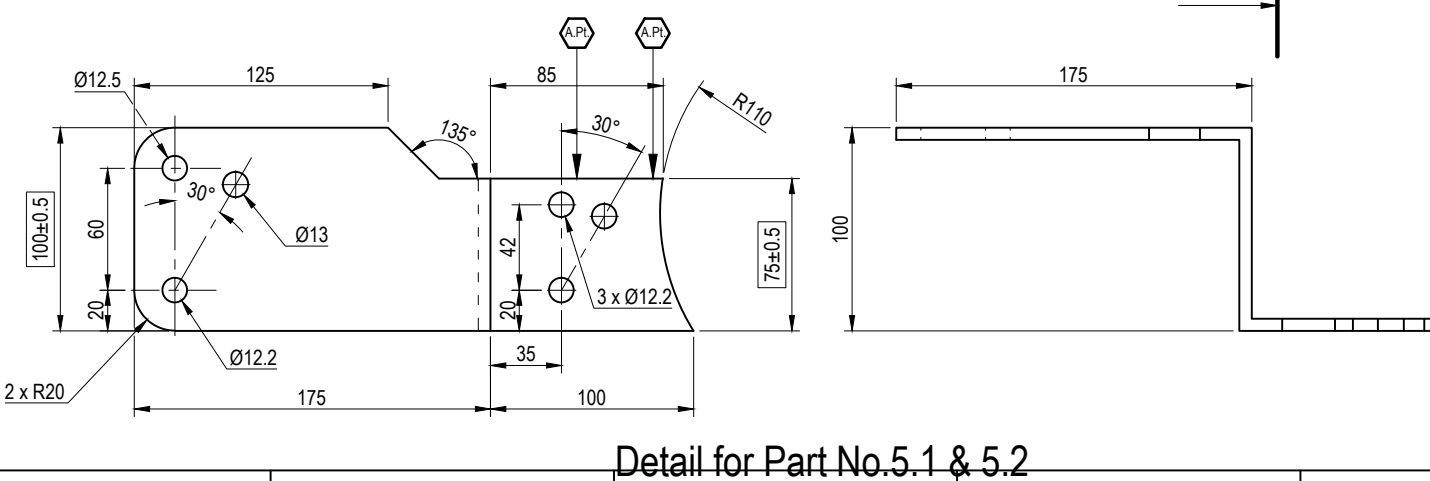
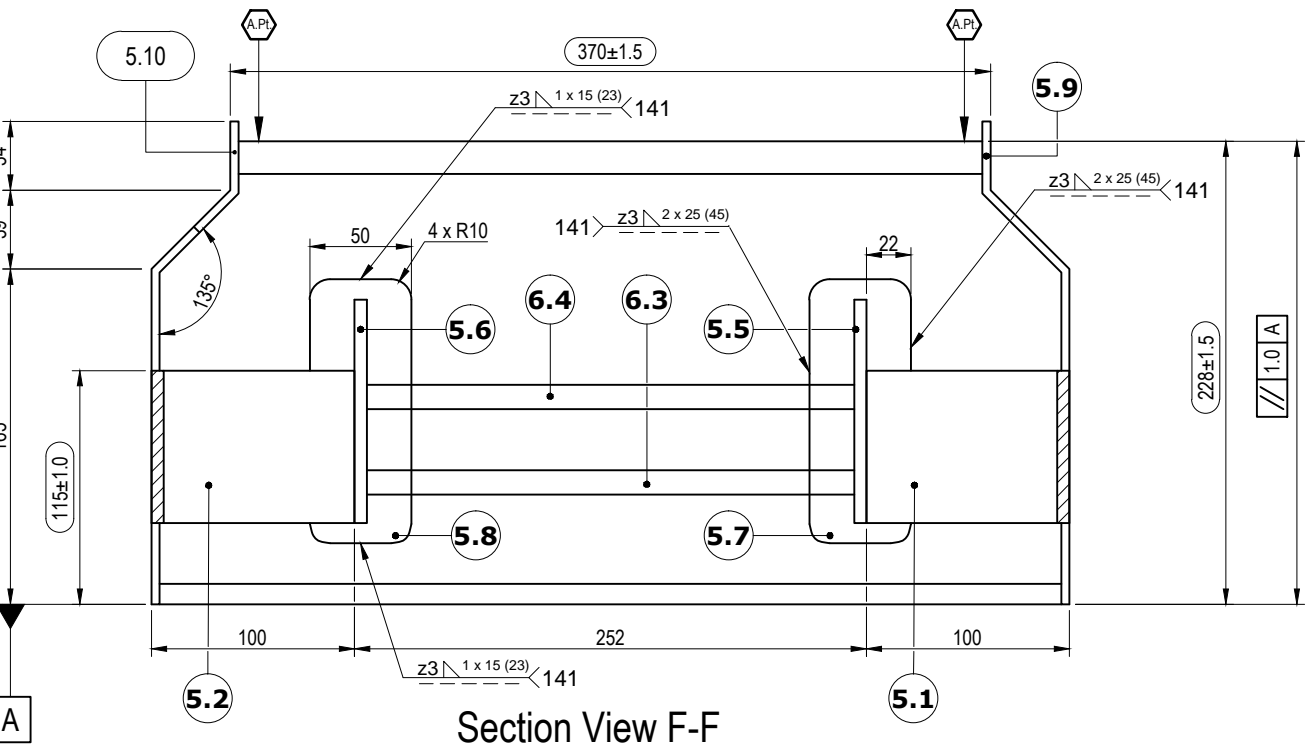
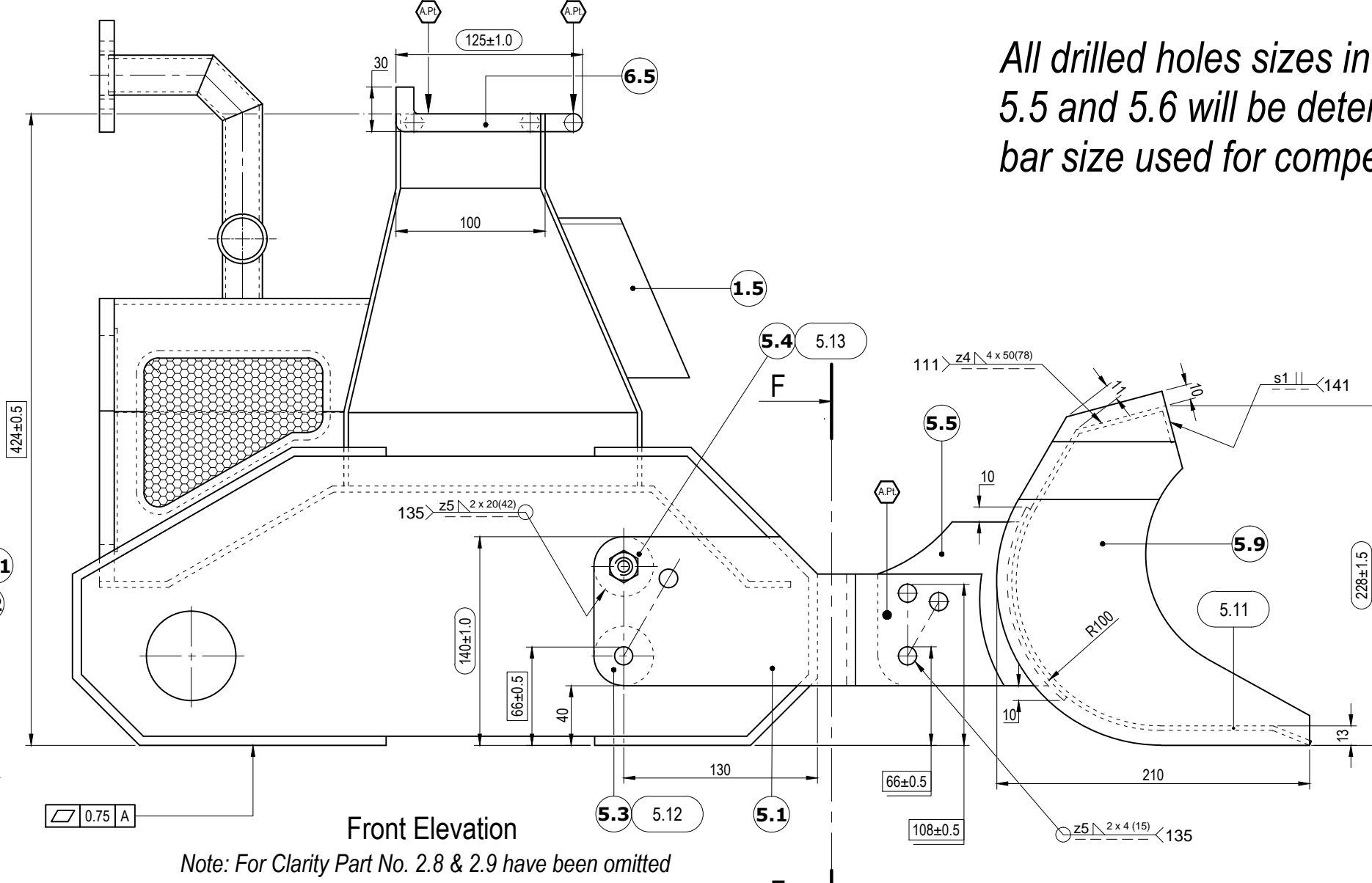
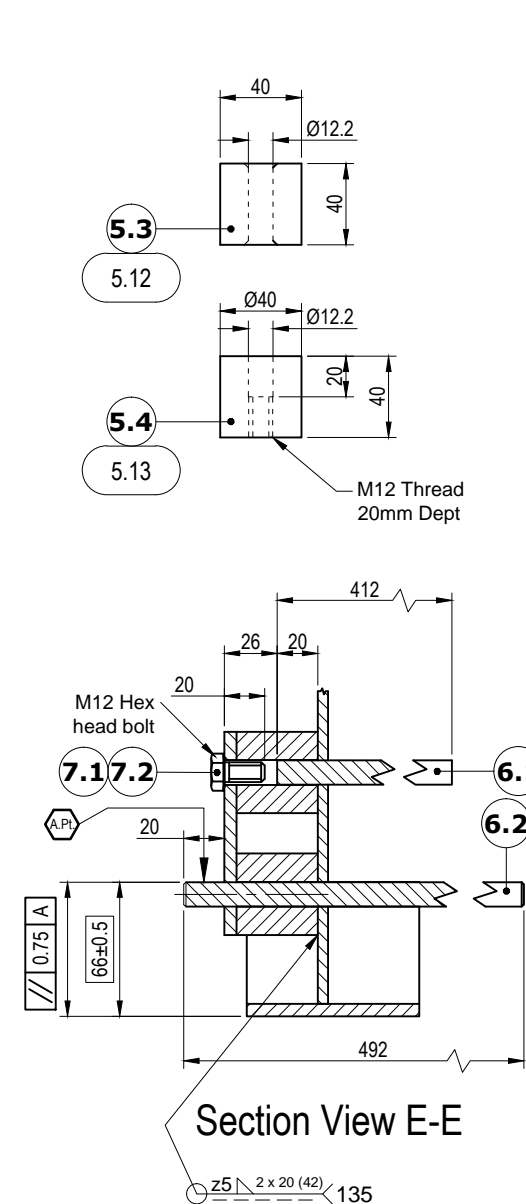
Sign:



# Module 4



All drilled holes sizes in 5.1 and 5.2 and 5.5 and 5.6 will be determined by round bar size used for competition.



A.P. Location of Assessment Points

Test Project for the 42<sup>nd</sup> WorldSkills Competition in Leipzig, Germany 2013. Copyright © 2013 WorldSkills International. All Rights Reserved.

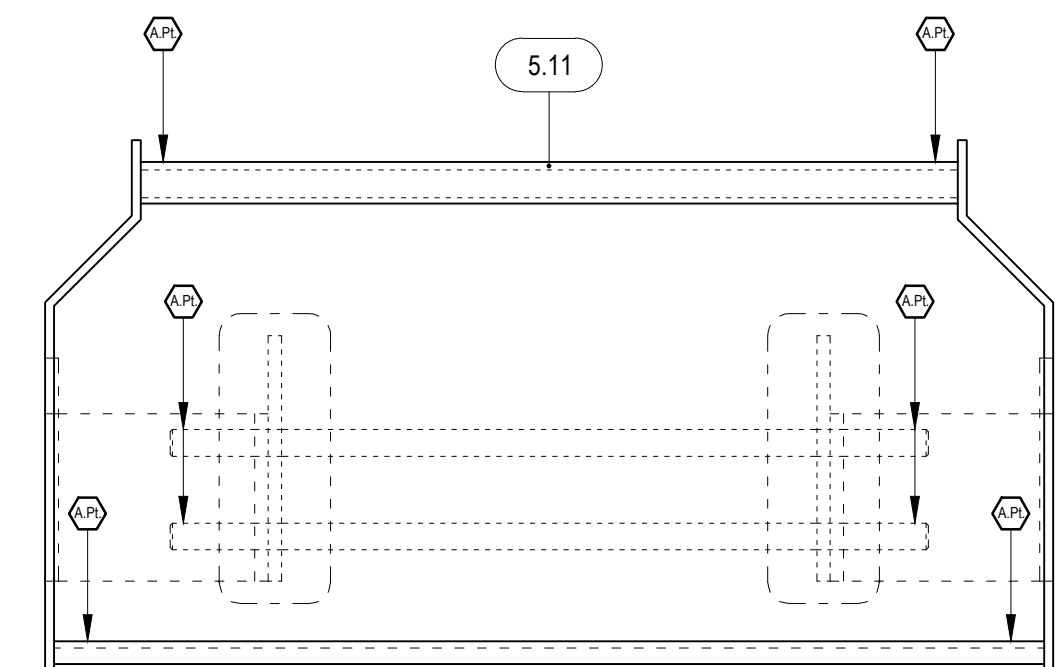


Skill: 42 - Construction Metal Works				
Scale: NA	Date: 25.05.2012	Paper: A2		
Drawn / Design by: Tim O'Halloran			Drawing No: WSC2013_TP42_IE_04_EN	
Description: Excavator			Rev: 1.4	Page: 4 of 5
			Appd:	Sign:

PRODUCED BY AN AUTODESK EDUCATIONAL PRODUCT



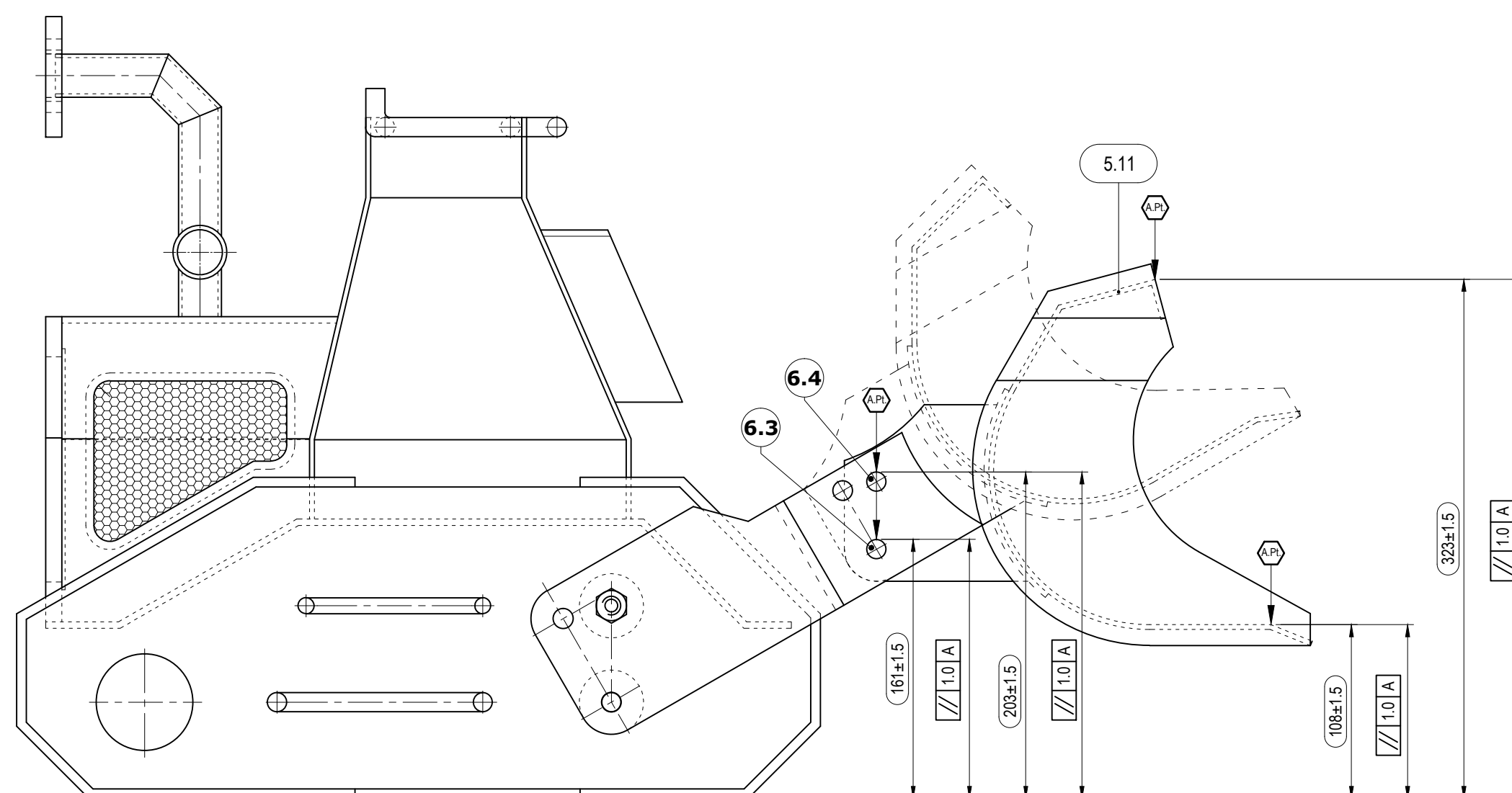
### Front Elevation



View B

View taken from Arrow B showing location of Assessment Points

*All drilled holes sizes in 5.1 and 5.2 and 5.5 and 5.6 will be determined by round bar size used for competition.*




### Front Elevation

### Location of Assessment Points

Test Project for the 42<sup>nd</sup> WorldSkills  
Competition in Leipzig, Germany 2013.  
Copyright © 2013 WorldSkills International.  
All Rights Reserved.



Skill: 42 - Construction Metal Works			
Scale: NA	Date: 25.05.2012	Paper: A2	
Drawn / Design by: Tim O'Halloran			Drawing No: WSC2013_TP42_1E_05_EN
Description: Excavator			Rev: 1.4 Appd: Sign: