

A

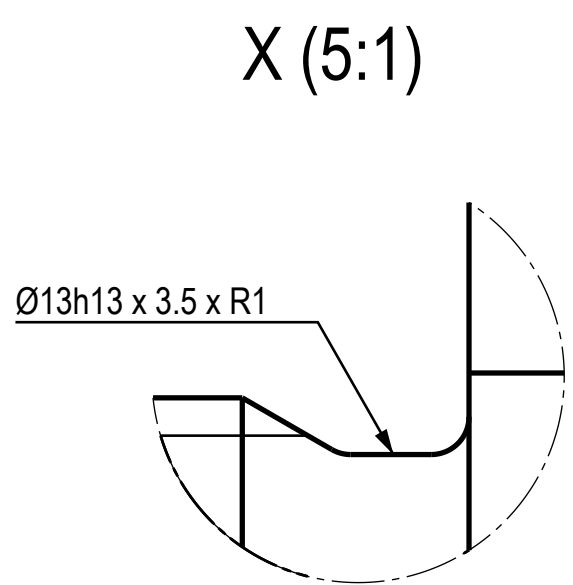
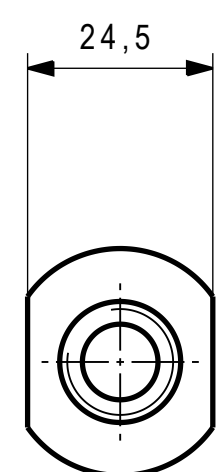
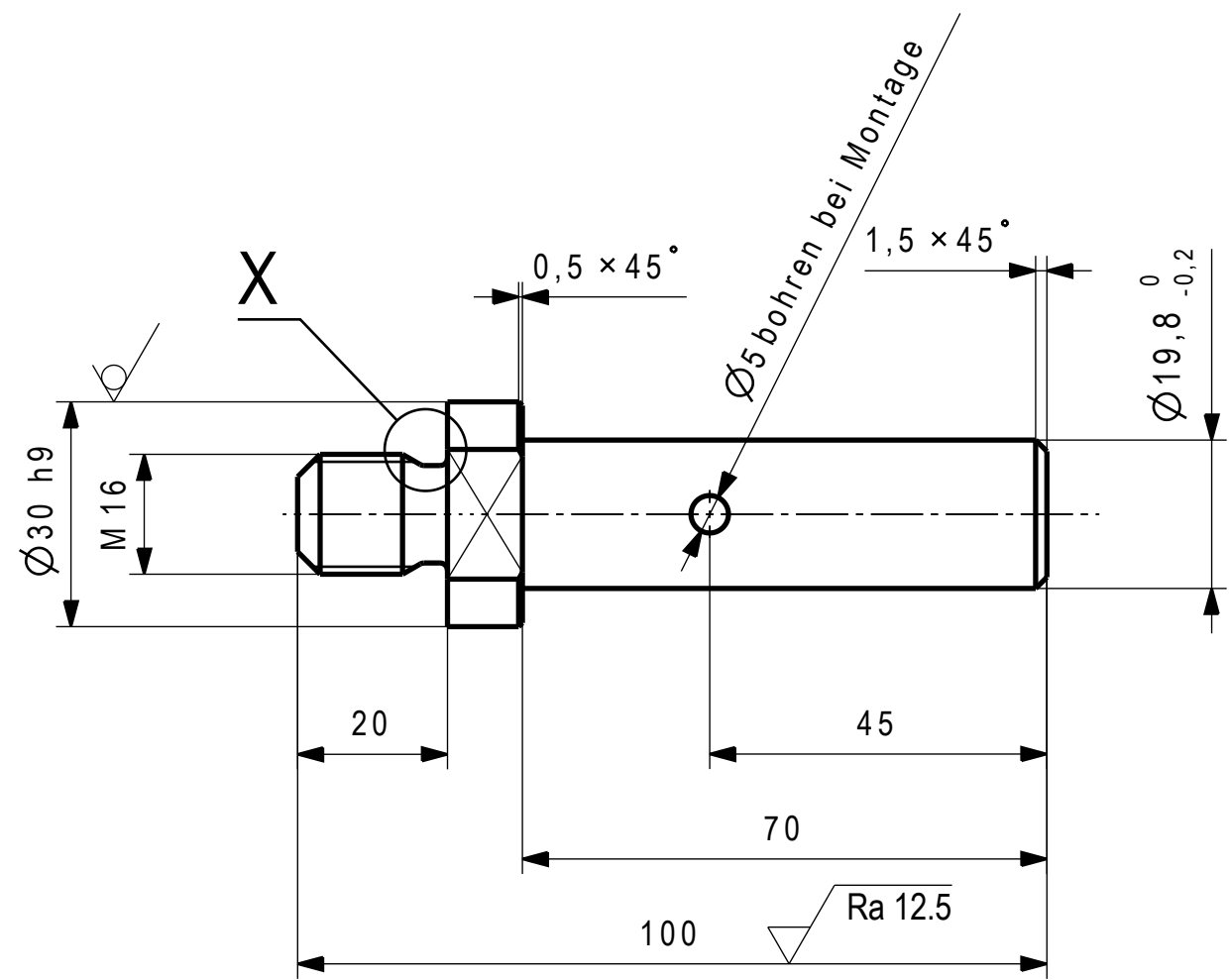
B


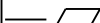
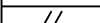



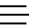

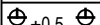


C

D

E

F



ECARTS CONVENTIONNELS POUR COTES SANS TOLERANCES CONVENTIONAL DEVIATIONS FOR DIMENSIONS WITHOUT TOLERANCES									
Linear	≤6	>6	>30	>120	>400	>1000	>2000	ISO 2768-1 Classe m	
	±0,1	±0,2	±0,3	±0,5	±0,8	±1,2	±2		
	≤10	>10	>30	>100	>300	>1000	ISO 2768-2 Classe H		
	0,02	0,06	0,1	0,2	0,3	0,4			
	0,01	0,03	0,05	0,1	0,15	0,2	1/2 valeur		
	≤10	>10	>50	>120	>400	ISO 2768-1 Classe m			
	±1°	±0°30'	±0°20'	±0°10'	±0°5'				
	≤100	>100	>300	>1000				ISO 2768-2 Classe H	
	0,2	0,3	0,4	0,5					
 ±0,5	ENTRAXE DE PERAGE DISTANCE BETWEEN CENTERS HOLES						Trous de passage H13 Clearance holes H13 ISO 273		
 -0,1 -0,3	ARETES ABATTUES DEBURR			DEGAGEMENT ARRONDI RELEASE			 +1 +0,5	ISO 13715	

Ra 3,2 (✓)

1	---			S235JRC (EN 10025-2)	Ø30h9 x 104	0
Mark	Code of the raw	Designation	Qty	Raw material	Dimension	kg
Component	kg	Analog	Product	Element		
BSA 2502 2186 00	0			Cisaille		
Description, local language				Page	Created by	JORDAN_Q
ENBOUT				1/1	Approved by DMS	
English description					Approved by IEP	
-					Approved by RD	
According to Bobst Specification (STF)				INTERNAL		
Scale 1:1 A3				© Bobst Mex SA CH-1001 LAUSANNE		
Metric				Revision Edition		
BSA 2502 2186 00 EX_				- 00		

Date	CM	Created by	Approved by	Change	REV