

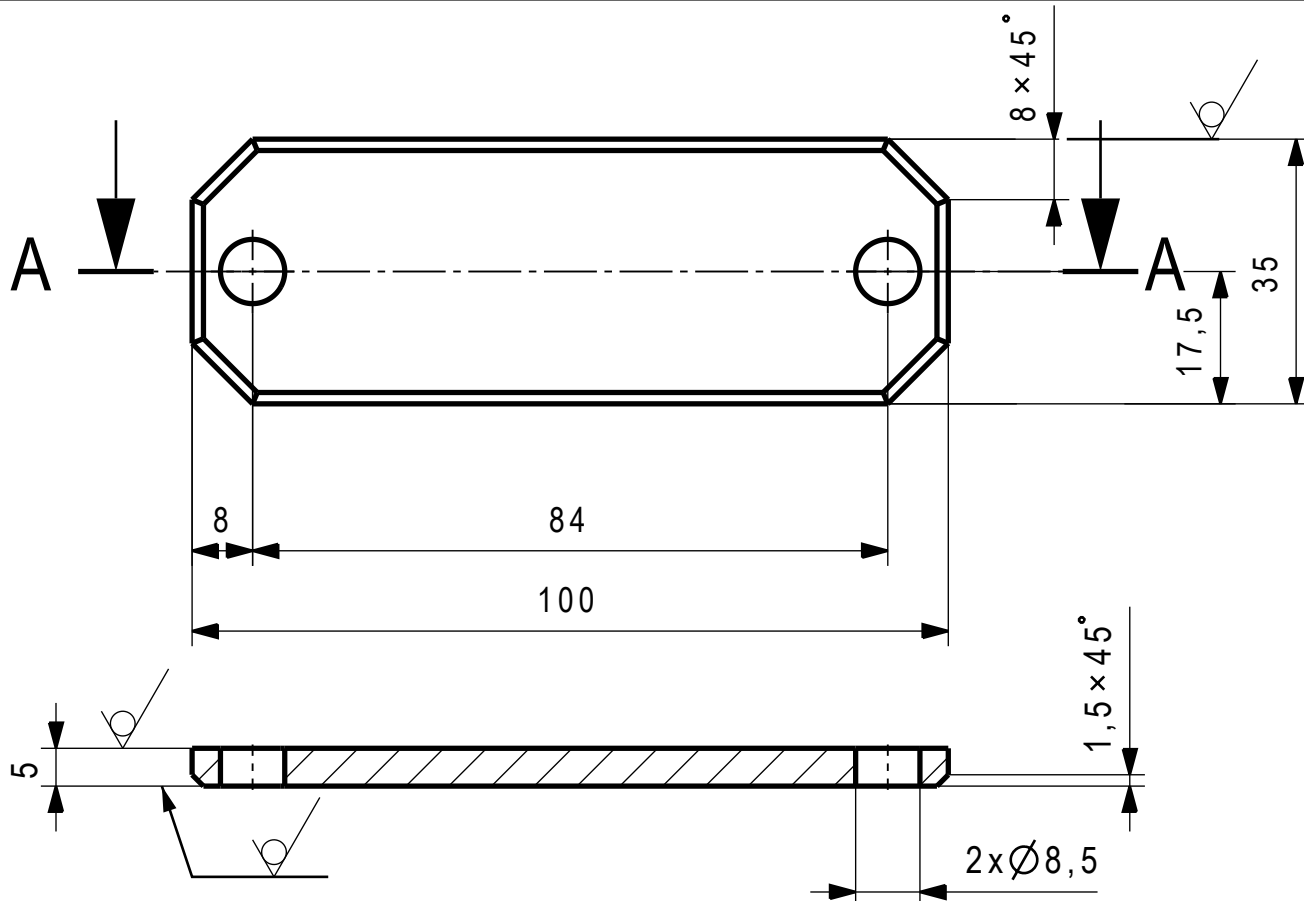
1

2

3

4

Date	CM	Created by	Approved by	Change	REV



ECARTS CONVENTIONNELS POUR COTES SANS TOLERANCES
CONVENTIONAL DEVIATIONS FOR DIMENSIONS WITHOUT TOLERANCES

Linear	≤6	>6	>30	>120	>400	>1000	>2000	ISO 2768-1 Classe m
	±0,1	±0,2	±0,3	±0,5	±0,8	±1,2	±2	
Angular	≤10	>10	>30	>100	>300	>1000		ISO 2768-2 Classe H
	0,02	0,06	0,1	0,2	0,3	0,4		
Surface	0,01	0,03	0,05	0,1	0,15	0,2		1/2 valeur
Form	≤1°	>1°	>5°	>12°	>40°			ISO 2768-1 Classe m
	±1°	±0°30'	±0°20'	±0°10'	±0°5'			
Position	≤100	>100	>300	>1000				ISO 2768-2 Classe H
	0,2	0,3	0,4	0,5	0,1	0,5	≤0,1	
Distance between centers holes	ENTRAXE DE PERCAGE DISTANCE BETWEEN CENTERS HOLES							
Deburr	ARETES ABATTUES DEBURR		DEGAGEMENT ARRONDI RELEASE					ISO 13715

Zincato blu passivato 10+5 µm

Da proteggere: Zone di tolleranza
ISO IT 7 e inferiore

Ra 12.5

(✓)

1	BSA 217 305 035	BARRE PLATE	S235JRC+C (EN 10277-2)	35/5 x 104	0
---	-----------------	-------------	------------------------	------------	---

Mark	Code of the raw	Designation	Qty	Raw material	Dimension	kg
------	-----------------	-------------	-----	--------------	-----------	----

Component	kg	Analog	Product	Element
-----------	----	--------	---------	---------

BSA 2502 2190 00	0			Cisaille
------------------	---	--	--	----------

Description, local language

SUPPORT ENGRENAGE

English description

Page

1/1

Created by	COLIC_A	12.07.2006
------------	---------	------------

Approved by DMS	
-----------------	--

Approved by IEP	
-----------------	--

Approved by RD	
----------------	--

BOBST

© Bobst Mex SA CH-1001 LAUSANNE

According to Bobst Specification (STF)

Scale 1:1

A4

Metric

BSA 2502 2190 00 EX

Revision Edition

- 00